

## Product datasheet for **TA387815**

### REEP1 Rabbit Polyclonal Antibody

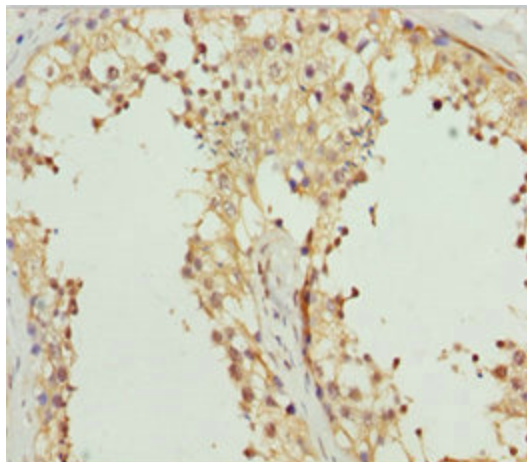
#### Product data:

Product Type:	Primary Antibodies
Applications:	IHC, WB
Recommended Dilution:	Recommended dilution: WB:1:1000-1:5000, IHC:1:20-1:200
Reactivity:	Mouse, Human
Host:	Rabbit
Isotype:	IgG
Clonality:	Polyclonal
Immunogen:	Recombinant Human Receptor expression-enhancing protein 1 protein (101-201AA)
Formulation:	PBS with 0.02% sodium azide, 50% glycerol, pH7.3.
Concentration:	lot specific
Purification:	Antigen Affinity Purified
Conjugation:	Unconjugated
Storage:	Upon receipt, store at -20°C or -80°C. Avoid repeated freeze.
Stability:	1 year from dispatch.
Database Link:	<a href="#">Q9H902</a>
Background:	Required for endoplasmic reticulum (ER) network formation, shaping and remodeling; it links ER tubules to the cytoskeleton. May also enhance the cell surface expression of odorant receptors (PubMed:20200447). May play a role in long-term axonal maintenance (PubMed:24478229).

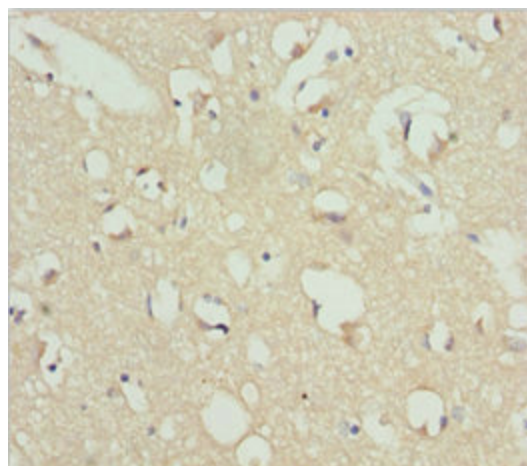


[View online »](#)

**Product images:**



Immunohistochemistry of paraffin-embedded human testis tissue using TA387815 at dilution of 1:100



Immunohistochemistry of paraffin-embedded human brain tissue using TA387815 at dilution of 1:100



Western blot

All lanes: REEP1 antibody at 5.84  $\mu\text{g}/\text{ml}$  + Mouse gonadal tissue

Secondary

Goat polyclonal to rabbit IgG at 1/10000 dilution

Predicted band size: 23, 19, 17 kDa

Observed band size: 23, 80 kDa