

## Product datasheet for **TA387810**

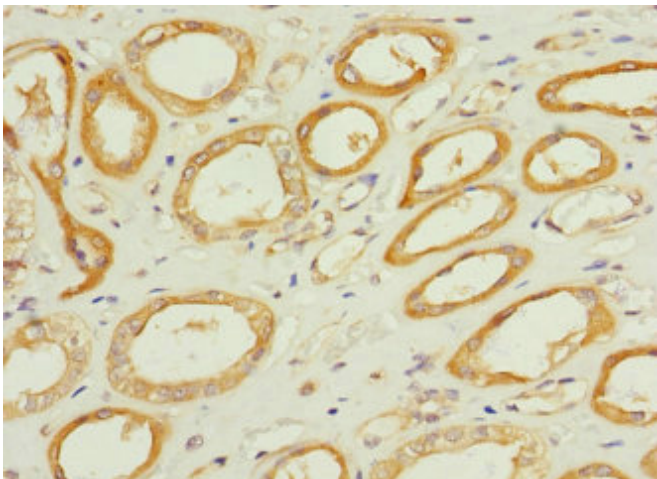
### TPK1 Rabbit Polyclonal Antibody

#### Product data:

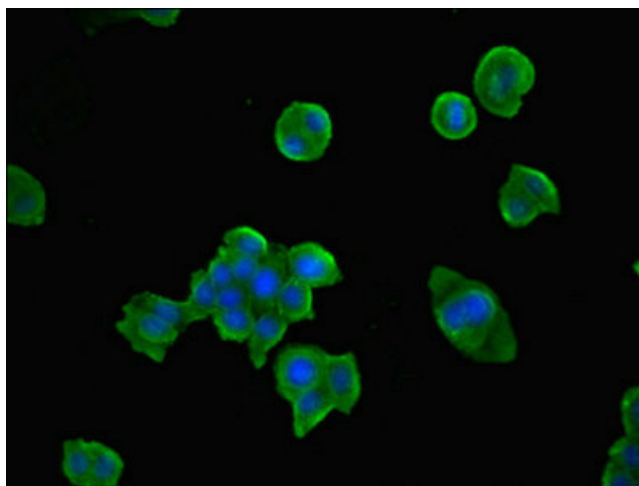
Product Type:	Primary Antibodies
Applications:	IF, IHC, IP, WB
Recommended Dilution:	Recommended dilution: WB:1:500-1:5000, IHC:1:20-1:200, IF:1:50-1:200, IP:1:200-1:2000
Reactivity:	Mouse, Human
Host:	Rabbit
Isotype:	IgG
Clonality:	Polyclonal
Immunogen:	Recombinant Human Thiamin pyrophosphokinase 1 protein (1-243AA)
Formulation:	PBS with 0.02% sodium azide, 50% glycerol, pH7.3.
Concentration:	lot specific
Purification:	Antigen Affinity Purified
Conjugation:	Unconjugated
Storage:	Upon receipt, store at -20°C or -80°C. Avoid repeated freeze.
Stability:	1 year from dispatch.
Database Link:	<a href="#">Q9H3S4</a>
Background:	Catalyzes the phosphorylation of thiamine to thiamine pyrophosphate. Can also catalyze the phosphorylation of pyrithiamine to pyrithiamine pyrophosphate.



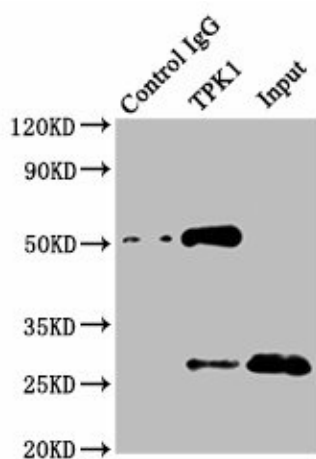
[View online »](#)

**Product images:**

Immunohistochemistry of paraffin-embedded human kidney tissue using TA387810 at dilution of 1:100



Immunofluorescent analysis of PC-3 cells using TA387810 at dilution of 1:100 and Alexa Fluor 488-conjugated AffiniPure Goat Anti-Rabbit IgG(H+L)

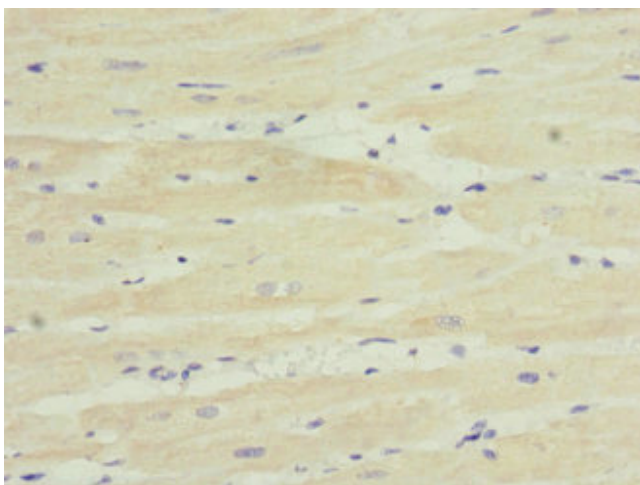


Immunoprecipitating TPK1 in Mouse kidney tissue

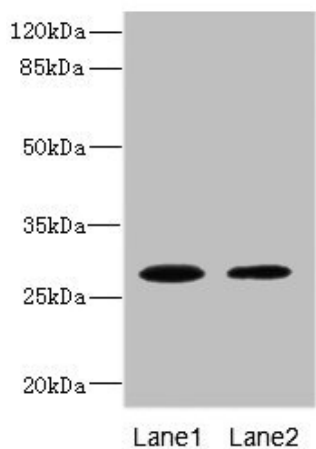
Lane 1: Rabbit control IgG instead of TA387810 in Mouse kidney tissue. For western blotting, a HRP-conjugated Protein G antibody was used as the secondary antibody (1/2000)

Lane 2: TA387810 (8µg) + Mouse kidney tissue (500µg)

Lane 3: Mouse kidney tissue (10µg)



Immunohistochemistry of paraffin-embedded human heart tissue using TA387810 at dilution of 1:100



Western blot

All lanes: TPK1 antibody at 0.78µg/ml

Lane 1: Mouse liver tissue

Lane 2: Mouse kidney tissue

Secondary

Goat polyclonal to rabbit IgG at 1/10000 dilution

Predicted band size: 28, 14 kDa

Observed band size: 28 kDa