

Product datasheet for **TA387807**

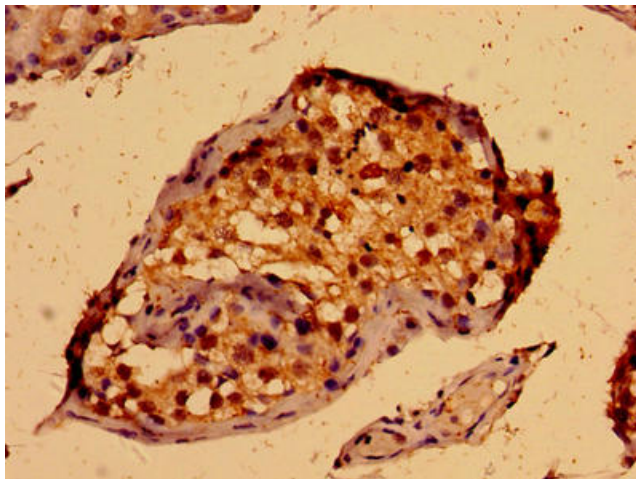
PORCN Rabbit Polyclonal Antibody

Product data:

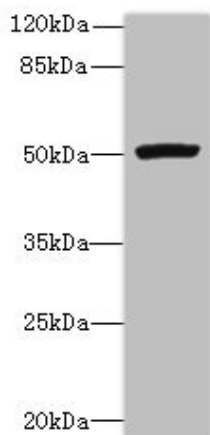
Product Type:	Primary Antibodies
Applications:	IHC, WB
Recommended Dilution:	Recommended dilution: WB:1:500-1:2000, IHC:1:20-1:200
Reactivity:	Mouse, Human
Host:	Rabbit
Isotype:	IgG
Clonality:	Polyclonal
Immunogen:	Recombinant Human Protein-serine O-palmitoleoyltransferase porcupine protein (269-332AA)
Formulation:	Preservative: 0.03% Proclin 300 Constituents: 50% Glycerol, 0.01M PBS, PH 7.4
Concentration:	lot specific
Purification:	>95%, Protein G purified
Conjugation:	Unconjugated
Storage:	Upon receipt, store at -20°C or -80°C. Avoid repeated freeze.
Stability:	1 year from dispatch.
Database Link:	Q9H237
Background:	Protein-serine O-palmitoleoyltransferase that acts as a key regulator of the Wnt signaling pathway by mediating the attachment of palmitoleate, a 16-carbon monounsaturated fatty acid (C16:1), to Wnt proteins. Serine palmitoleylation of WNT proteins is required for efficient binding to frizzled receptors.



[View online »](#)

Product images:

Immunohistochemistry of paraffin-embedded human testis tissue using TA387807 at dilution of 1:100



Western blot
All lanes: PORCN antibody at 3 μ g/ml + Mouse thymus tissue
Secondary
Goat polyclonal to rabbit IgG at 1/10000 dilution
Predicted band size: 53, 52, 43 kDa
Observed band size: 53 kDa