

Product datasheet for **TA387806M**

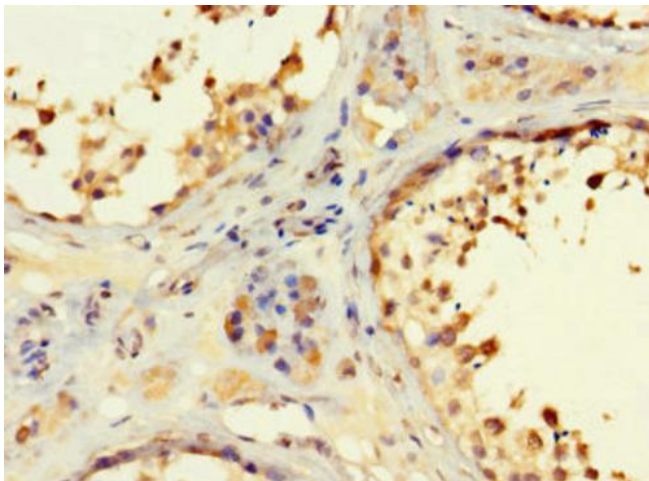
RSPH9 Rabbit Polyclonal Antibody

Product data:

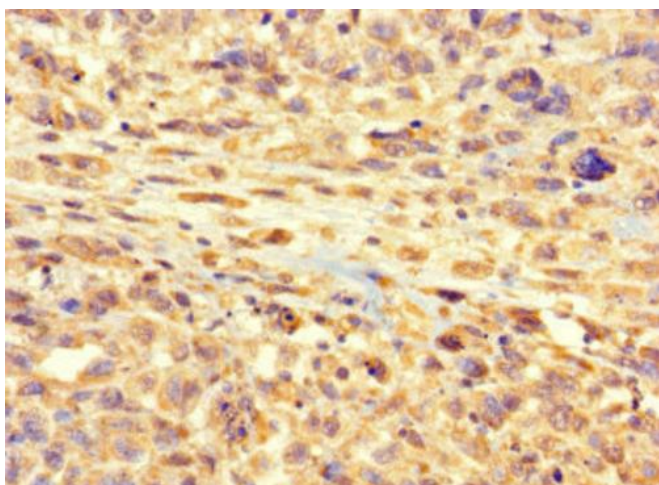
Product Type:	Primary Antibodies
Applications:	IHC, WB
Recommended Dilution:	Recommended dilution: WB:1:2000-1:5000, IHC:1:20-1:200
Reactivity:	Mouse, Human
Host:	Rabbit
Isotype:	IgG
Clonality:	Polyclonal
Immunogen:	Recombinant Human Radial spoke head protein 9 homolog protein (62-171AA)
Formulation:	Preservative: 0.03% Proclin 300 Constituents: 50% Glycerol, 0.01M PBS, PH 7.4
Concentration:	lot specific
Purification:	>95%, Protein G purified
Conjugation:	Unconjugated
Storage:	Upon receipt, store at -20°C or -80°C. Avoid repeated freeze.
Stability:	1 year from dispatch.
Database Link:	Q9H1X1
Background:	Probable component of the axonemal radial spoke head. Radial spokes are regularly spaced along cilia, sperm and flagella axonemes. They consist of a thin stalk, which is attached to a subfiber of the outer doublet microtubule, and a bulbous head, which is attached to the stalk and appears to interact with the projections from the central pair of microtubules.

[View online »](#)

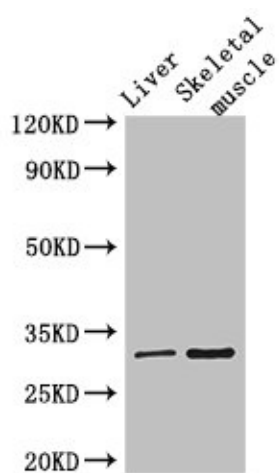
Product images:



Immunohistochemistry of paraffin-embedded human testis tissue using [TA387806] at dilution of 1:100



Immunohistochemistry of paraffin-embedded human melanoma using [TA387806] at dilution of 1:100



Western Blot

Positive WB detected in: Mouse liver tissue,
Mouse skeletal muscle tissue

All lanes: RSPH9 antibody at 3 μ g/ml

Secondary

Goat polyclonal to rabbit IgG at 1/50000 dilution

Predicted band size: 32, 35 kDa

Observed band size: 32 kDa