

Product datasheet for **TA387804M**

MKRN2 Rabbit Polyclonal Antibody

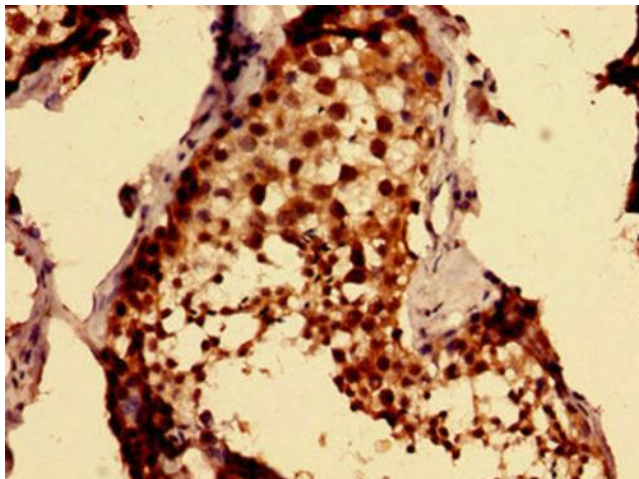
Product data:

Product Type:	Primary Antibodies
Applications:	IHC, WB
Recommended Dilution:	Recommended dilution: WB:1:500-1:5000, IHC:1:20-1:200
Reactivity:	Mouse, Rat, Human
Host:	Rabbit
Isotype:	IgG
Clonality:	Polyclonal
Immunogen:	Recombinant Human Probable E3 ubiquitin-protein ligase makorin-2 protein (29-170AA)
Formulation:	Preservative: 0.03% Proclin 300 Constituents: 50% Glycerol, 0.01M PBS, pH 7.4
Concentration:	lot specific
Purification:	>95%, Protein G purified
Conjugation:	Unconjugated
Storage:	Upon receipt, store at -20°C or -80°C. Avoid repeated freeze.
Stability:	1 year from dispatch.
Database Link:	Q9H000
Background:	E3 ubiquitin ligase catalyzing the covalent attachment of ubiquitin moieties onto substrate proteins.

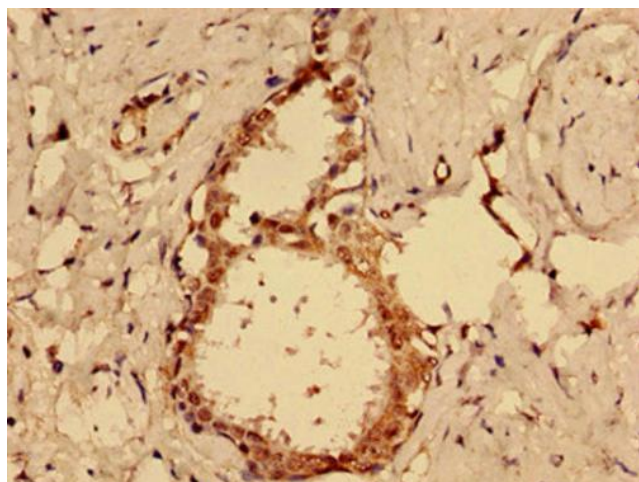


[View online »](#)

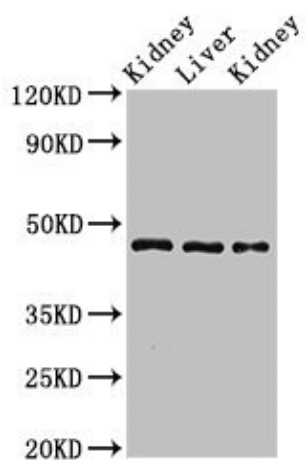
Product images:



Immunohistochemistry of paraffin-embedded human testis tissue using [TA387804] at dilution of 1:100



Immunohistochemistry of paraffin-embedded human ovarian cancer using [TA387804] at dilution of 1:100



Western Blot

Positive WB detected in: Rat kidney tissue, Rat liver tissue, Mouse kidney tissue

All lanes: MKRN2 antibody at 3 μ g/ml

Secondary

Goat polyclonal to rabbit IgG at 1/50000 dilution

Predicted band size: 47, 42 kDa

Observed band size: 47 kDa