

## Product datasheet for **TA387800M**

### OR2H1 Rabbit Polyclonal Antibody

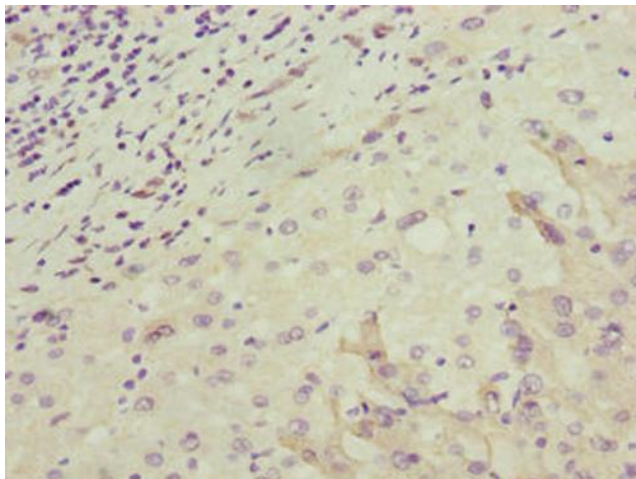
#### Product data:

Product Type:	Primary Antibodies
Applications:	IF, IHC, WB
Recommended Dilution:	Recommended dilution: WB:1:500-1:2000, IHC:1:20-1:200, IF:1:50-1:200
Reactivity:	Mouse, Human
Host:	Rabbit
Isotype:	IgG
Clonality:	Polyclonal
Immunogen:	Recombinant Human Olfactory receptor 2H1 protein (157-193AA)
Formulation:	Preservative: 0.03% Proclin 300 Constituents: 50% Glycerol, 0.01M PBS, PH 7.4
Concentration:	lot specific
Purification:	>95%, Protein G purified
Conjugation:	Unconjugated
Storage:	Upon receipt, store at -20°C or -80°C. Avoid repeated freeze.
Stability:	1 year from dispatch.
Database Link:	<a href="#">Q9GZK4</a>
Background:	Odorant receptor.

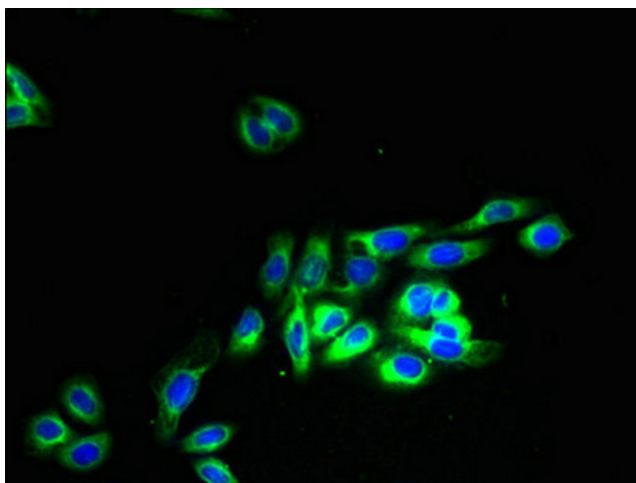


[View online »](#)

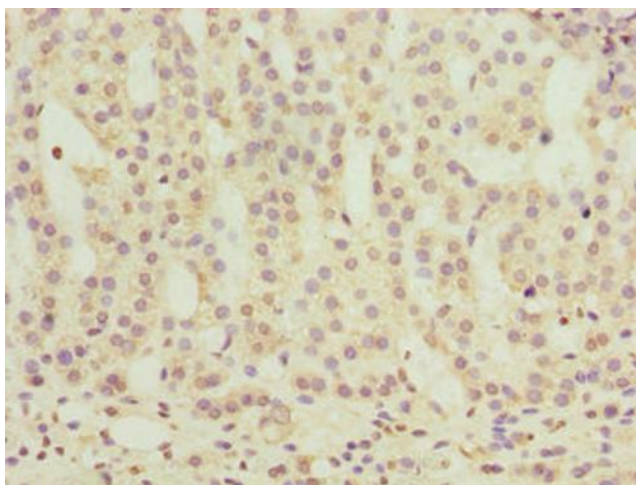
## Product images:



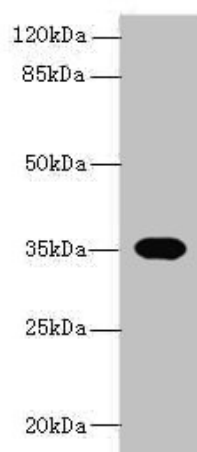
Immunohistochemistry of paraffin-embedded human liver cancer using [TA387800] at dilution of 1:100



Immunofluorescent analysis of HepG2 cells using [TA387800] at dilution of 1:100 and Alexa Fluor 488-conjugated AffiniPure Goat Anti-Rabbit IgG(H+L)



Immunohistochemistry of paraffin-embedded human adrenal gland tissue using [TA387800] at dilution of 1:100



Western blot  
All lanes: OR2H1 antibody at 0.5µg/ml + Mouse liver tissue  
Secondary  
Goat polyclonal to rabbit IgG at 1/10000 dilution  
Predicted band size: 35 kDa  
Observed band size: 35 kDa