

## Product datasheet for **TA387795**

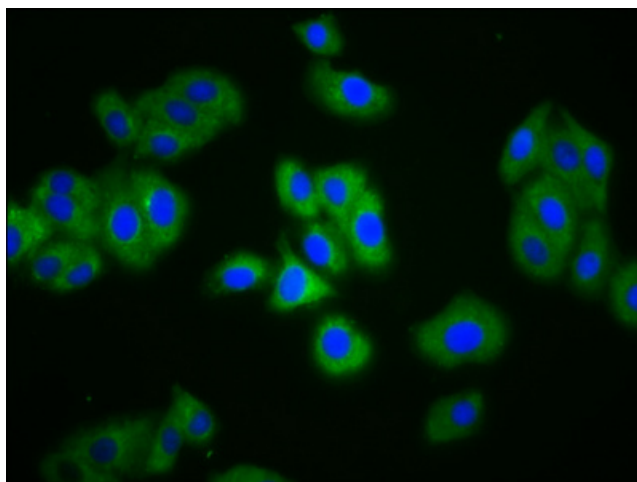
### SLC4A5 Rabbit Polyclonal Antibody

#### Product data:

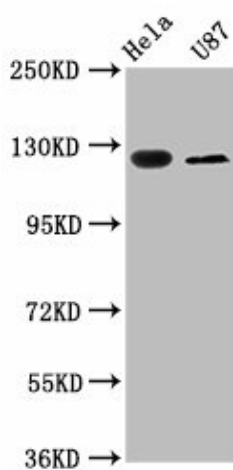
Product Type:	Primary Antibodies
Applications:	IF, WB
Recommended Dilution:	Recommended dilution: WB:1:500-1:5000, IF:1:50-1:200
Reactivity:	Human
Host:	Rabbit
Isotype:	IgG
Clonality:	Polyclonal
Immunogen:	Recombinant Human Electrogenic sodium bicarbonate cotransporter 4 protein (1071-1137AA)
Formulation:	Preservative: 0.03% Proclin 300 Constituents: 50% Glycerol, 0.01M PBS, pH 7.4
Concentration:	lot specific
Purification:	>95%, Protein G purified
Conjugation:	Unconjugated
Storage:	Upon receipt, store at -20°C or -80°C. Avoid repeated freeze.
Stability:	1 year from dispatch.
Database Link:	<a href="#">Q9BY07</a>
Background:	Mediates sodium- and bicarbonate-dependent electrogenic sodium bicarbonate cotransport, with a Na(+):HCO <sub>3</sub> (-) stoichiometry of 2:1. May have a housekeeping function in regulating the pH of tissues in which it is expressed. May play a role in mediating Na(+):HCO <sub>3</sub> (-) cotransport in hepatocytes and intrahepatic cholangiocytes. Also may be important in protecting the renal paranchyma from alterations in urine pH.



[View online »](#)

**Product images:**

Immunofluorescence staining of HepG2 cells with TA387795 at 1:133, counter-stained with DAPI. The cells were fixed in 4% formaldehyde, permeabilized using 0.2% Triton X-100 and blocked in 10% normal Goat Serum. The cells were then incubated with the antibody overnight at 4°C. The secondary antibody was Alexa Fluor 488-conjugated AffiniPure Goat Anti-Rabbit IgG(H+L).

**Western Blot**

Positive WB detected in: HeLa whole cell lysate, U87 whole cell lysate  
All lanes: SLC4A5 antibody at 2.7µg/ml  
Secondary  
Goat polyclonal to rabbit IgG at 1/50000 dilution  
Predicted band size: 127, 125, 116, 109, 108, 114, 119 kDa  
Observed band size: 127 kDa