

## Product datasheet for **TA387791M**

### CHID1 Rabbit Polyclonal Antibody

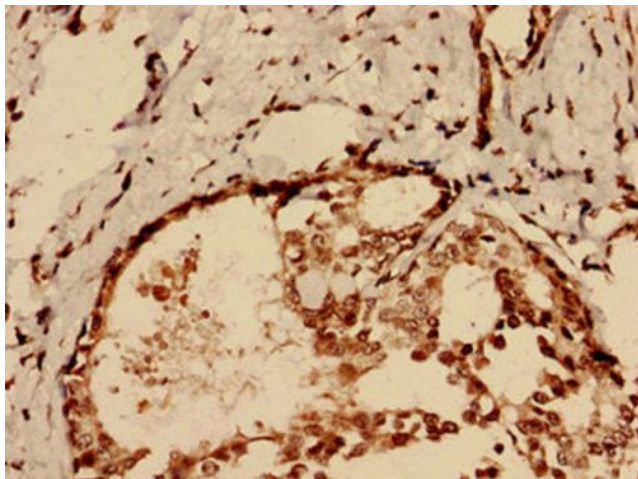
#### Product data:

Product Type:	Primary Antibodies
Applications:	IHC, WB
Recommended Dilution:	Recommended dilution: WB:1:500-1:5000, IHC:1:20-1:200
Reactivity:	Human
Host:	Rabbit
Isotype:	IgG
Clonality:	Polyclonal
Immunogen:	Recombinant Human Chitinase domain-containing protein 1 protein (20-393AA)
Formulation:	Preservative: 0.03% Proclin 300 Constituents: 50% Glycerol, 0.01M PBS, PH 7.4
Concentration:	lot specific
Purification:	>95%, Protein G purified
Conjugation:	Unconjugated
Storage:	Upon receipt, store at -20°C or -80°C. Avoid repeated freeze.
Stability:	1 year from dispatch.
Database Link:	<a href="#">Q9BWS9</a>
Background:	Saccharide- and LPS-binding protein with possible roles in pathogen sensing and endotoxin neutralization. Ligand-binding specificity relates to the length of the oligosaccharides, with preference for chitotetraose (in vitro).

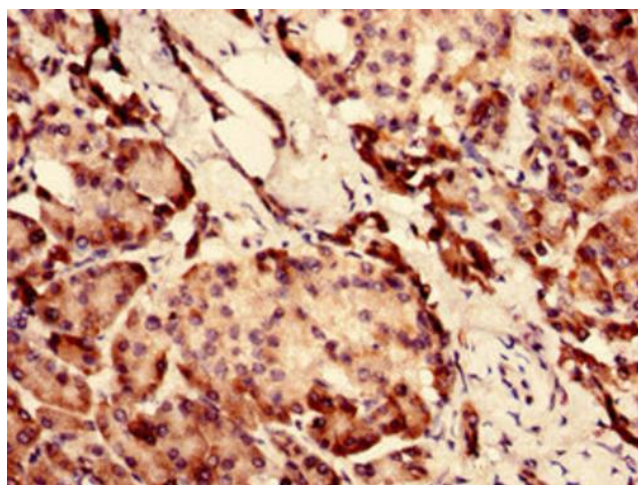


[View online »](#)

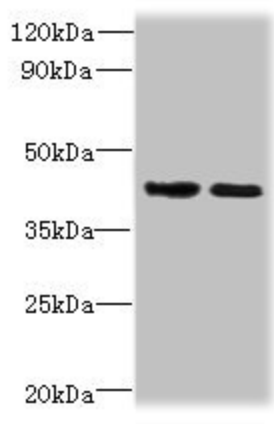
## Product images:



Immunohistochemistry analysis of human breast cancer using [TA387791] at dilution of 1:100



Immunohistochemistry analysis of human pancreatic tissue using [TA387791] at dilution of 1:100



Western blot

All lanes: CHID1 antibody at 0.2µg/ml

Lane 1: Hela whole cell lysate

Lane 2: U251 whole cell lysate

Secondary

Goat polyclonal to rabbit IgG at 1/10000 dilution

Predicted band size: 45, 48, 42 kDa

Observed band size: 45 kDa