

## Product datasheet for **TA387788**

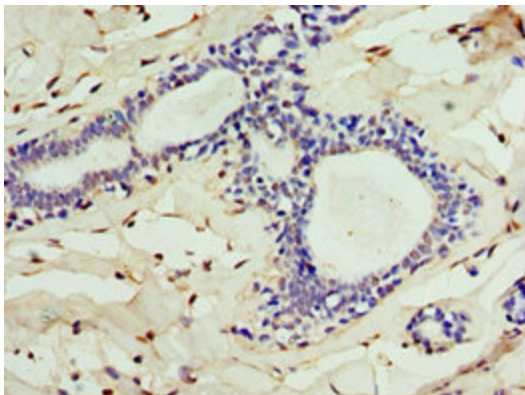
### ALG1 Rabbit Polyclonal Antibody

#### Product data:

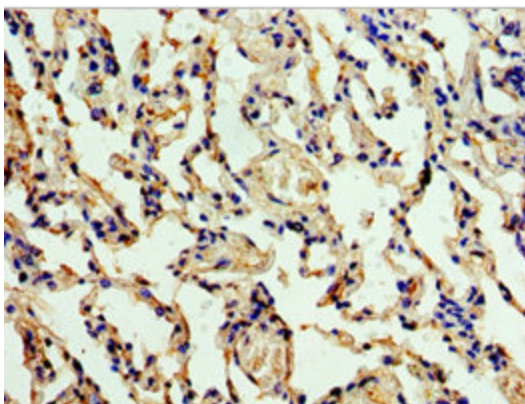
Product Type:	Primary Antibodies
Applications:	IHC, WB
Recommended Dilution:	Recommended dilution: WB:1:500-1:2000, IHC:1:20-1:200
Reactivity:	Human
Host:	Rabbit
Isotype:	IgG
Clonality:	Polyclonal
Immunogen:	Recombinant Human Chitobiosyldiphosphodolichol beta-mannosyltransferase protein (215-464AA)
Formulation:	PBS with 0.02% sodium azide, 50% glycerol, pH7.3.
Concentration:	lot specific
Purification:	Antigen Affinity Purified
Conjugation:	Unconjugated
Storage:	Upon receipt, store at -20°C or -80°C. Avoid repeated freeze.
Stability:	1 year from dispatch.
Database Link:	<a href="#">Q9BT22</a>
Background:	Participates in the formation of the lipid-linked precursor oligosaccharide for N-glycosylation. Involved in assembling the dolichol-pyrophosphate-GlcNAc(2)-Man5 intermediate on the cytoplasmic surface of the ER.



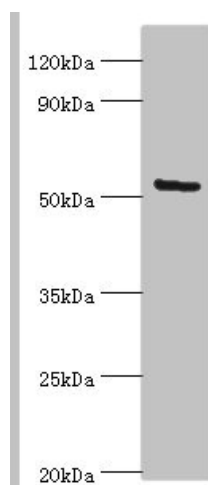
[View online »](#)

**Product images:**

Immunohistochemistry of paraffin-embedded human breast cancer using TA387788 at dilution of 1:100



Immunohistochemistry of paraffin-embedded human lung tissue using TA387788 at dilution of 1:100



Western blot

All lanes: ALG1 antibody at 10 $\mu$ g/ml + HeLa whole cell lysate

Secondary

Goat polyclonal to rabbit IgG at 1/10000 dilution

Predicted band size: 53, 41 kDa

Observed band size: 53 kDa