

## Product datasheet for **TA387786**

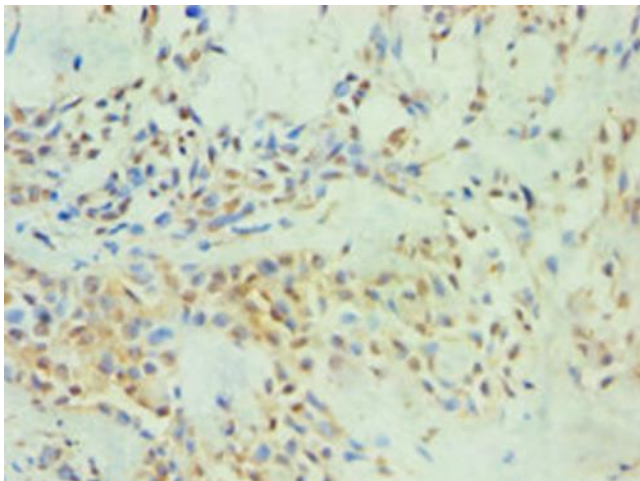
### **SPIN2B Rabbit Polyclonal Antibody**

#### **Product data:**

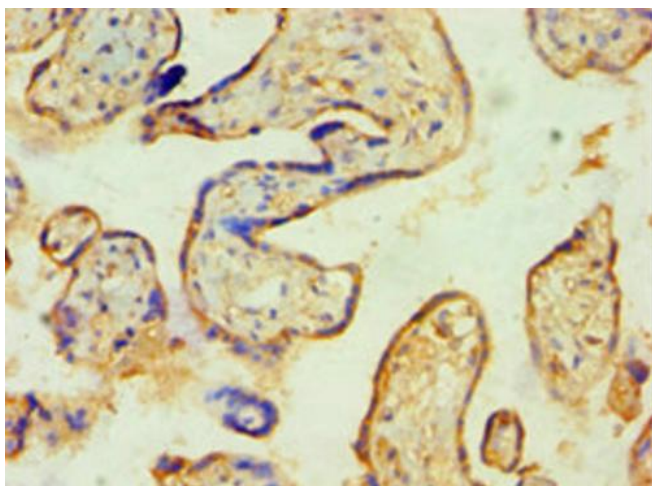
Product Type:	Primary Antibodies
Applications:	IHC, WB
Recommended Dilution:	Recommended dilution: WB:1:500-1:2000, IHC:1:20-1:200
Reactivity:	Mouse, Human
Host:	Rabbit
Isotype:	IgG
Clonality:	Polyclonal
Immunogen:	Recombinant Human Spindlin-2B protein (1-258AA)
Formulation:	PBS with 0.02% sodium azide, 50% glycerol, pH7.3.
Concentration:	lot specific
Purification:	Antigen Affinity Purified
Conjugation:	Unconjugated
Storage:	Upon receipt, store at -20°C or -80°C. Avoid repeated freeze.
Stability:	1 year from dispatch.
Database Link:	<a href="#">Q9BPZ2</a>
Background:	Involved in the regulation of cell cycle progression, this activity is related to the inhibition of apoptosis following the removal of essential growth factors.



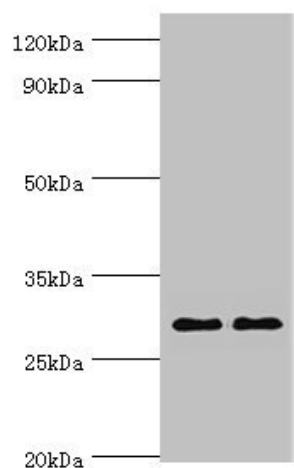
[View online »](#)

**Product images:**

Immunohistochemistry of paraffin-embedded human breast cancer using TA387786 at dilution of 1:100



Immunohistochemistry of paraffin-embedded human placenta tissue using TA387786 at dilution of 1:100



**Western blot**

All lanes: Spindlin-2B antibody at 4µg/ml

Lane 1: Mouse liver tissue

Lane 2: Mouse heart tissue

Secondary

Goat polyclonal to rabbit IgG at 1/10000 dilution

Predicted band size: 29 kDa

Observed band size: 29 kDa