

Product datasheet for **TA387785**

SPIN2B Rabbit Polyclonal Antibody

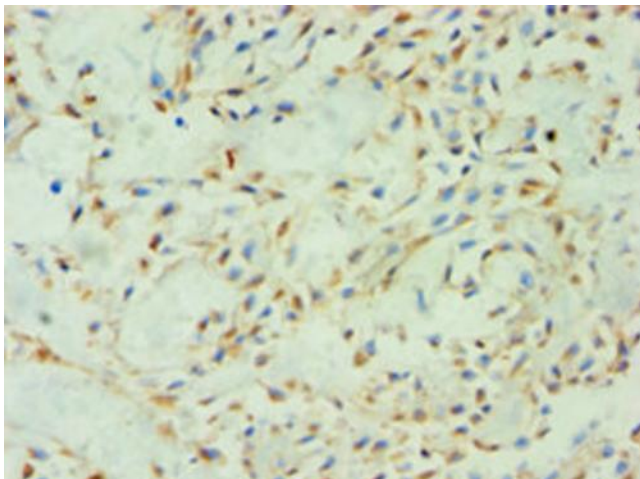
Product data:

Product Type:	Primary Antibodies
Applications:	IHC, WB
Recommended Dilution:	Recommended dilution: WB:1:200-1:1000, IHC:1:20-1:200
Reactivity:	Mouse, Human
Host:	Rabbit
Isotype:	IgG
Clonality:	Polyclonal
Immunogen:	Recombinant Human Spindlin-2B protein (1-258AA)
Formulation:	PBS with 0.02% sodium azide, 50% glycerol, pH7.3.
Concentration:	lot specific
Purification:	Antigen Affinity Purified
Conjugation:	Unconjugated
Storage:	Upon receipt, store at -20°C or -80°C. Avoid repeated freeze.
Stability:	1 year from dispatch.
Database Link:	Q9BPZ2
Background:	Involved in the regulation of cell cycle progression, this activity is related to the inhibition of apoptosis following the removal of essential growth factors.

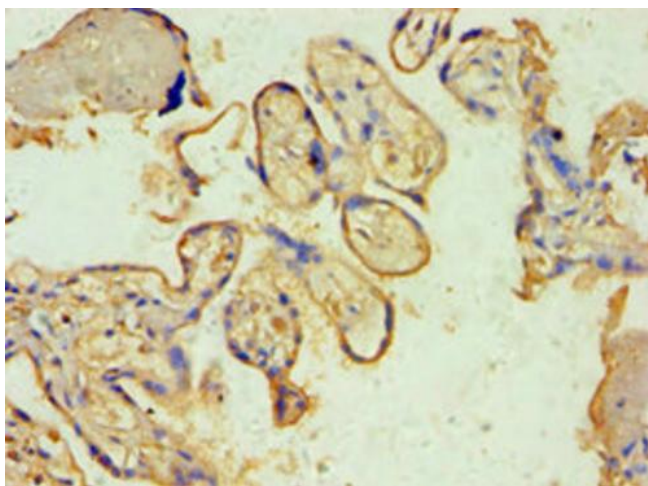


[View online »](#)

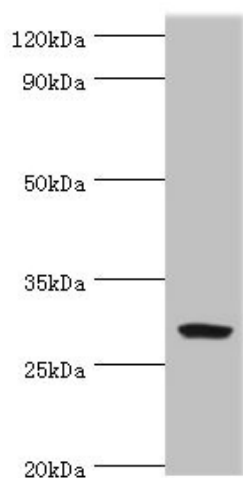
Product images:



Immunohistochemistry of paraffin-embedded human breast cancer using TA387785 at dilution of 1:100



Immunohistochemistry of paraffin-embedded human placenta tissue using TA387785 at dilution of 1:100



Western blot
 All lanes: Spindlin-2B antibody at 4µg/ml + Mouse gastric tissue
 Secondary
 Goat polyclonal to rabbit IgG at 1/10000 dilution
 Predicted band size: 29 kDa
 Observed band size: 29 kDa