

## Product datasheet for **TA387776M**

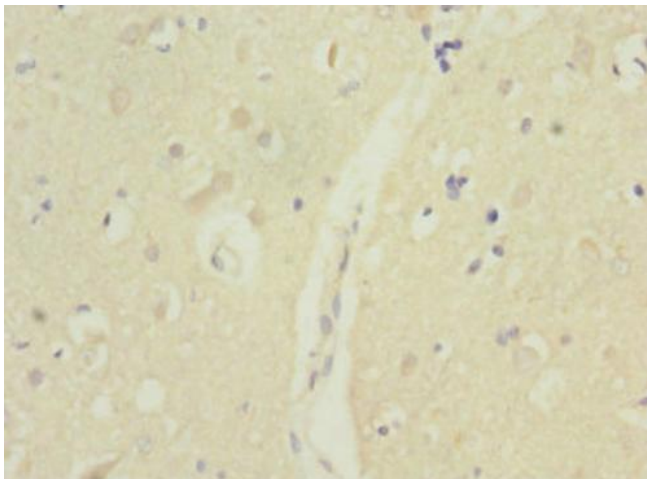
### **MTERF3 Rabbit Polyclonal Antibody**

#### **Product data:**

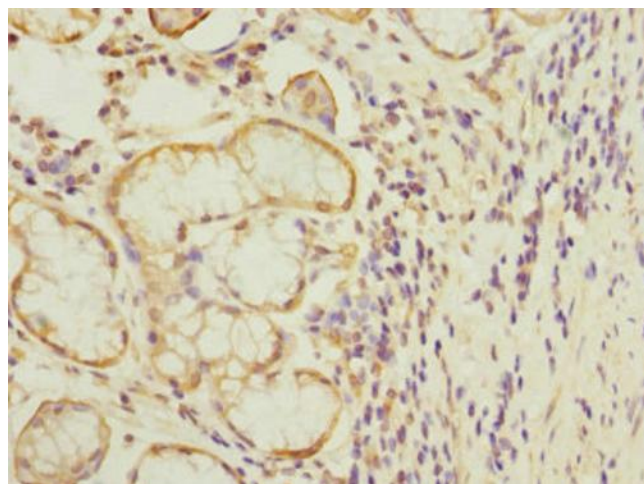
Product Type:	Primary Antibodies
Applications:	IHC, WB
Recommended Dilution:	Recommended dilution: WB:1:1000-1:5000, IHC:1:20-1:200
Reactivity:	Human
Host:	Rabbit
Isotype:	IgG
Clonality:	Polyclonal
Immunogen:	Recombinant Human Transcription termination factor 3, mitochondrial protein (69-300AA)
Formulation:	PBS with 0.02% sodium azide, 50% glycerol, pH7.3.
Concentration:	lot specific
Purification:	Antigen Affinity Purified
Conjugation:	Unconjugated
Storage:	Upon receipt, store at -20°C or -80°C. Avoid repeated freeze.
Stability:	1 year from dispatch.
Database Link:	<a href="#">Q96E29</a>
Background:	Binds promoter DNA and regulates initiation of transcription. Required for normal mitochondrial transcription, and for normal assembly of mitochondrial respiratory complexes. Required for normal mitochondrial function (By similarity).



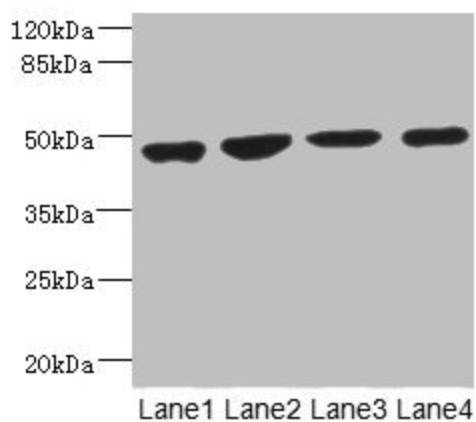
[View online »](#)

**Product images:**

Immunohistochemistry of paraffin-embedded human brain tissue using [TA387776] at dilution of 1:100



Immunohistochemistry of paraffin-embedded human gastric cancer using [TA387776] at dilution of 1:100



**Western blot**

All lanes: MTERFD1 antibody at 3.94µg/ml

Lane 1: U251 whole cell lysate

Lane 2: 293T whole cell lysate

Lane 3: Hela whole cell lysate

Lane 4: K562 whole cell lysate

Secondary

Goat polyclonal to rabbit IgG at 1/10000 dilution

Predicted band size: 48, 38, 35 kDa

Observed band size: 48 kDa