

Product datasheet for **TA387766M**

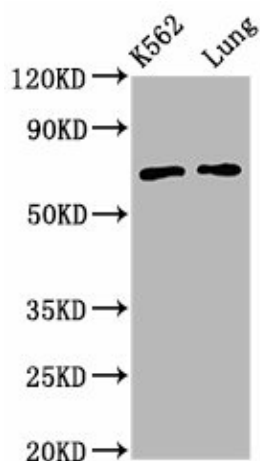
POF1B Rabbit Polyclonal Antibody

Product data:

Product Type:	Primary Antibodies
Applications:	WB
Recommended Dilution:	Recommended dilution: WB:1:500-1:5000
Reactivity:	Rat, Human
Host:	Rabbit
Isotype:	IgG
Clonality:	Polyclonal
Immunogen:	Recombinant Human Protein POF1B protein (532-589AA)
Formulation:	Preservative: 0.03% Proclin 300 Constituents: 50% Glycerol, 0.01M PBS, pH 7.4
Concentration:	lot specific
Purification:	>95%, Protein G purified
Conjugation:	Unconjugated
Storage:	Upon receipt, store at -20°C or -80°C. Avoid repeated freeze.
Stability:	1 year from dispatch.
Database Link:	Q8WVV4
Background:	Plays a key role in the organization of epithelial monolayers by regulating the actin cytoskeleton. May be involved in ovary development.



[View online »](#)

Product images:

Western Blot

Positive WB detected in: K562 whole cell lysate,
Rat lung tissue

All lanes: POF1B antibody at 3.4µg/ml

Secondary

Goat polyclonal to rabbit IgG at 1/50000 dilution

Predicted band size: 69, 35 kDa

Observed band size: 69 kDa