

Product datasheet for **TA387761M**

DYNC2LI1 Rabbit Polyclonal Antibody

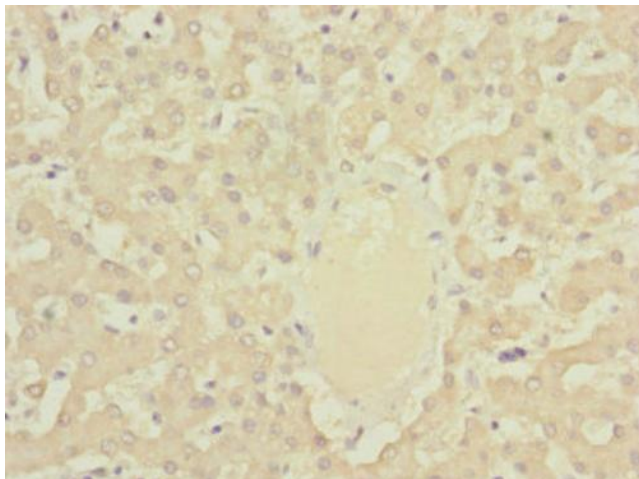
Product data:

Product Type:	Primary Antibodies
Applications:	IHC, WB
Recommended Dilution:	Recommended dilution: WB:1:1000-1:5000, IHC:1:20-1:200
Reactivity:	Mouse, Human
Host:	Rabbit
Isotype:	IgG
Clonality:	Polyclonal
Immunogen:	Recombinant Human Cytoplasmic dynein 2 light intermediate chain 1 protein (1-352AA)
Formulation:	PBS with 0.02% sodium azide, 50% glycerol, pH7.3.
Concentration:	lot specific
Purification:	Antigen Affinity Purified
Conjugation:	Unconjugated
Storage:	Upon receipt, store at -20°C or -80°C. Avoid repeated freeze.
Stability:	1 year from dispatch.
Database Link:	Q8TCX1
Background:	May function as a motor for intraflagellar retrograde transport. Functions in cilia biogenesis (By similarity).

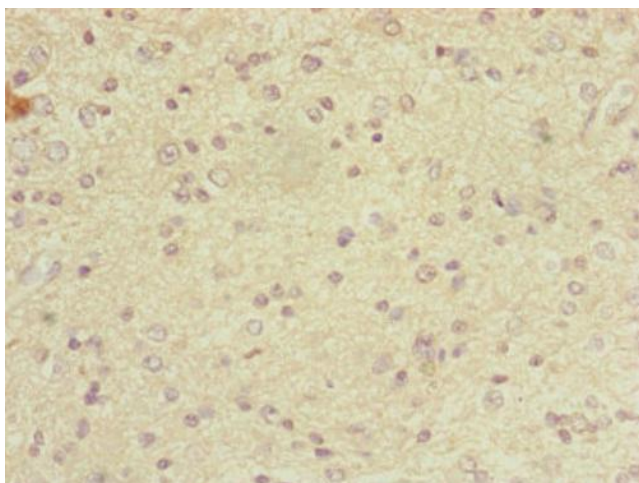


[View online »](#)

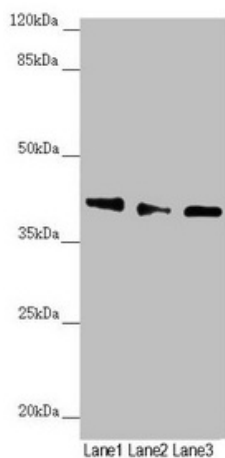
Product images:



Immunohistochemistry of paraffin-embedded human liver tissue using [TA387761] at dilution of 1:100



Immunohistochemistry of paraffin-embedded human glioma using [TA387761] at dilution of 1:100



Western blot

All lanes: DYNC2LI1 antibody at 1.17µg/ml

Lane 1: 293T whole cell lysate

Lane 2: A549 whole cell lysate

Lane 3: Mouse gonadal tissue

Secondary

Goat polyclonal to rabbit IgG at 1/10000 dilution

Predicted band size: 40, 38, 23, 16 kDa

Observed band size: 40 kDa