

## Product datasheet for **TA387761**

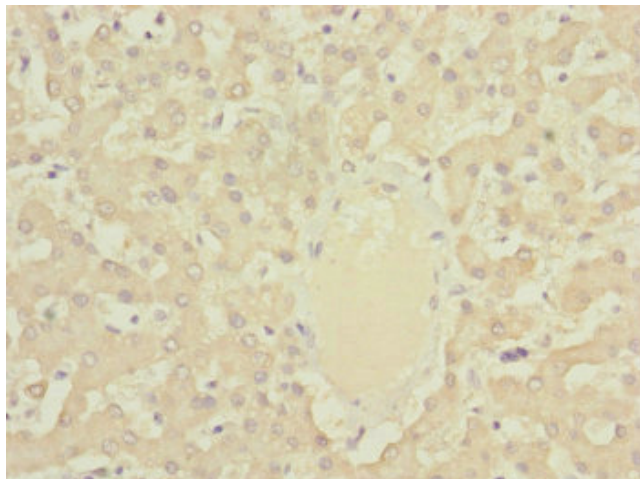
### **DYNC2LI1 Rabbit Polyclonal Antibody**

#### **Product data:**

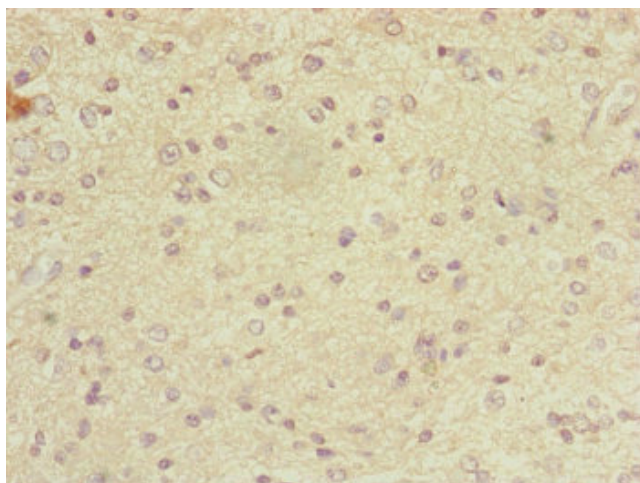
<b>Product Type:</b>	Primary Antibodies
<b>Applications:</b>	IHC, WB
<b>Recommended Dilution:</b>	Recommended dilution: WB:1:1000-1:5000, IHC:1:20-1:200
<b>Reactivity:</b>	Mouse, Human
<b>Host:</b>	Rabbit
<b>Isotype:</b>	IgG
<b>Clonality:</b>	Polyclonal
<b>Immunogen:</b>	Recombinant Human Cytoplasmic dynein 2 light intermediate chain 1 protein (1-352AA)
<b>Formulation:</b>	PBS with 0.02% sodium azide, 50% glycerol, pH7.3.
<b>Concentration:</b>	lot specific
<b>Purification:</b>	Antigen Affinity Purified
<b>Conjugation:</b>	Unconjugated
<b>Storage:</b>	Upon receipt, store at -20°C or -80°C. Avoid repeated freeze.
<b>Stability:</b>	1 year from dispatch.
<b>Database Link:</b>	<a href="#">Q8TCX1</a>
<b>Background:</b>	May function as a motor for intraflagellar retrograde transport. Functions in cilia biogenesis (By similarity).



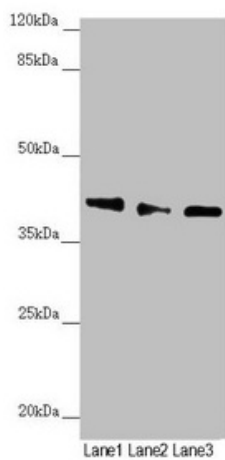
[View online »](#)

**Product images:**

Immunohistochemistry of paraffin-embedded human liver tissue using TA387761 at dilution of 1:100



Immunohistochemistry of paraffin-embedded human glioma using TA387761 at dilution of 1:100



#### Western blot

All lanes: DYNC2LI1 antibody at 1.17 $\mu$ g/ml

Lane 1: 293T whole cell lysate

Lane 2: A549 whole cell lysate

Lane 3: Mouse gonadal tissue

Secondary

Goat polyclonal to rabbit IgG at 1/10000 dilution

Predicted band size: 40, 38, 23, 16 kDa

Observed band size: 40 kDa