

Product datasheet for **TA387760M**

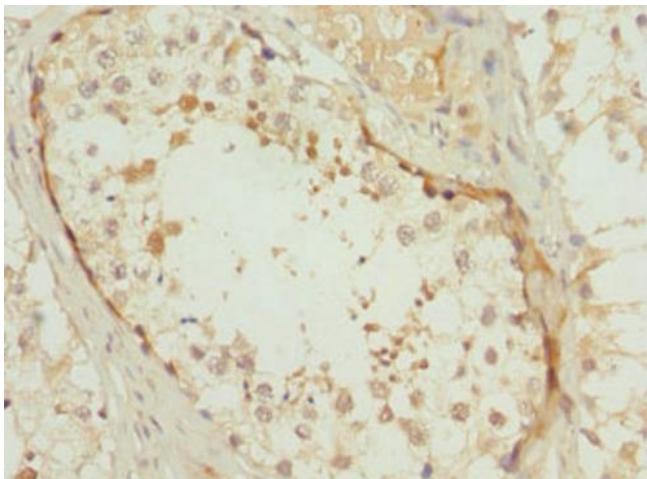
POC1B Rabbit Polyclonal Antibody

Product data:

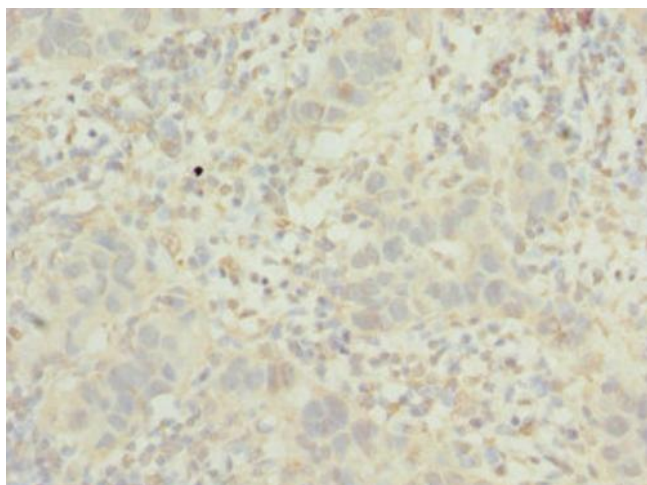
Product Type:	Primary Antibodies
Applications:	IHC, WB
Recommended Dilution:	Recommended dilution: WB:1:1000-1:5000, IHC:1:20-1:200
Reactivity:	Mouse, Human
Host:	Rabbit
Isotype:	IgG
Clonality:	Polyclonal
Immunogen:	Recombinant Human POC1 centriolar protein homolog B protein (299-478AA)
Formulation:	PBS with 0.02% sodium azide, 50% glycerol, pH7.3.
Concentration:	lot specific
Purification:	Antigen Affinity Purified
Conjugation:	Unconjugated
Storage:	Upon receipt, store at -20°C or -80°C. Avoid repeated freeze.
Stability:	1 year from dispatch.
Database Link:	Q8TC44
Background:	Plays an important role in centriole assembly and/or stability and ciliogenesis (PubMed:20008567). Involved in early steps of centriole duplication, as well as in the later steps of centriole length control (PubMed:19109428). Acts in concert with POC1A to ensure centriole integrity and proper mitotic spindle formation. Required for primary cilia formation, ciliary length and also cell proliferation (PubMed:23015594). Required for retinal integrity (PubMed:25044745).


[View online »](#)

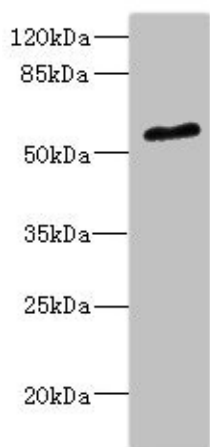
Product images:



Immunohistochemistry of paraffin-embedded human testis tissue using [TA387760] at dilution of 1:100



Immunohistochemistry of paraffin-embedded human bladder cancer using [TA387760] at dilution of 1:100



Western blot

All lanes: POC1B antibody at 2.35µg/ml + Mouse small intestine tissue

Secondary

Goat polyclonal to rabbit IgG at 1/10000 dilution

Predicted band size: 54, 50 kDa

Observed band size: 54 kDa