

Product datasheet for **TA387758M**

PIGX Rabbit Polyclonal Antibody

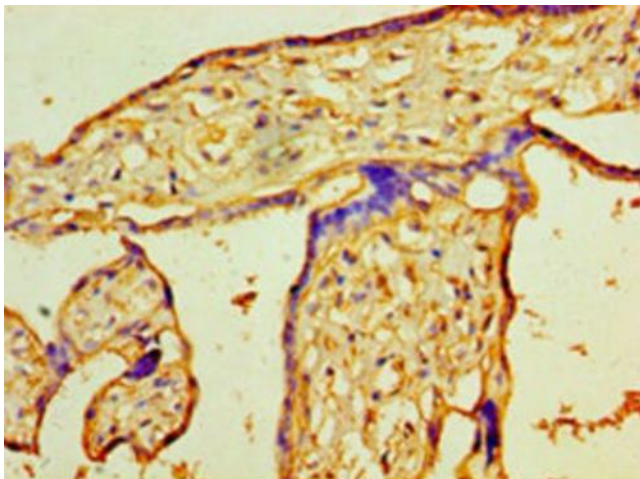
Product data:

Product Type:	Primary Antibodies
Applications:	IHC, WB
Recommended Dilution:	Recommended dilution: WB:1:1000-1:5000, IHC:1:20-1:200
Reactivity:	Mouse, Human
Host:	Rabbit
Isotype:	IgG
Clonality:	Polyclonal
Immunogen:	Recombinant Human Phosphatidylinositol-glycan biosynthesis class X protein (42-230AA)
Formulation:	Preservative: 0.03% Proclin 300 Constituents: 50% Glycerol, 0.01M PBS, PH 7.4
Concentration:	lot specific
Purification:	>95%, Protein G purified
Conjugation:	Unconjugated
Storage:	Upon receipt, store at -20°C or -80°C. Avoid repeated freeze.
Stability:	1 year from dispatch.
Database Link:	Q8TBF5
Background:	Essential component of glycosylphosphatidylinositol-mannosyltransferase 1 which transfers the first of the 4 mannoses in the GPI-anchor precursors during GPI-anchor biosynthesis. Probably acts by stabilizing the mannosyltransferase PIGM.

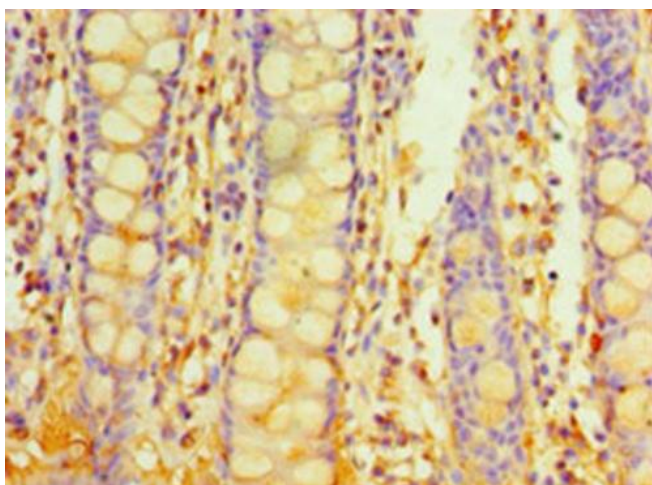


[View online »](#)

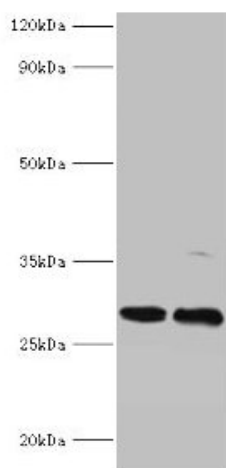
Product images:



Immunohistochemistry of paraffin-embedded human placenta tissue using [TA387758] at dilution of 1:100



Immunohistochemistry of paraffin-embedded human colon tissue using [TA387758] at dilution of 1:100



Western blot

All lanes: PIGX antibody at 2 μ g/ml

Lane 1: Mouse kidney tissue

Lane 2: 293T whole cell lysate

Secondary

Goat polyclonal to rabbit IgG at 1/10000 dilution

Predicted band size: 29, 31 kDa

Observed band size: 29 kDa