

## Product datasheet for **TA387757**

### GDAP1 Rabbit Polyclonal Antibody

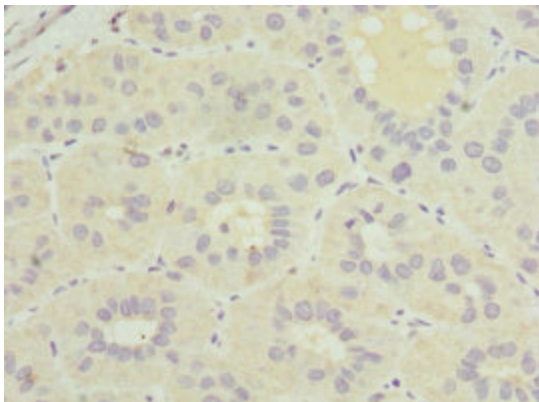
#### Product data:

Product Type:	Primary Antibodies
Applications:	IHC, WB
Recommended Dilution:	Recommended dilution: WB:1:1000-1:5000, IHC:1:20-1:200
Reactivity:	Mouse, Human
Host:	Rabbit
Isotype:	IgG
Clonality:	Polyclonal
Immunogen:	Recombinant Human Ganglioside-induced differentiation-associated protein 1 protein (1-225AA)
Formulation:	PBS with 0.02% sodium azide, 50% glycerol, pH7.3.
Concentration:	lot specific
Purification:	Antigen Affinity Purified
Conjugation:	Unconjugated
Storage:	Upon receipt, store at -20°C or -80°C. Avoid repeated freeze.
Stability:	1 year from dispatch.
Database Link:	<a href="#">Q8TB36</a>
Background:	Regulates the mitochondrial network by promoting mitochondrial fission.

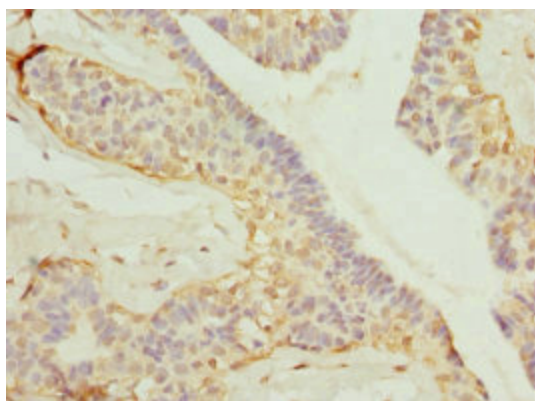


[View online »](#)

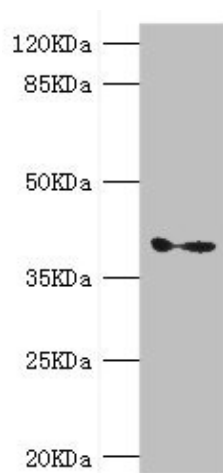
**Product images:**



Immunohistochemistry of paraffin-embedded human liver cancer using TA387757 at dilution of 1:100



Immunohistochemistry of paraffin-embedded human breast cancer using TA387757 at dilution of 1:100



Western blot

All lanes: GDAP1 antibody at 1.11 $\mu$ g/ml + Mouse brain tissue

Secondary

Goat polyclonal to rabbit IgG at 1/10000 dilution

Predicted band size: 42, 34 kDa

Observed band size: 42 kDa