

## Product datasheet for **TA387756**

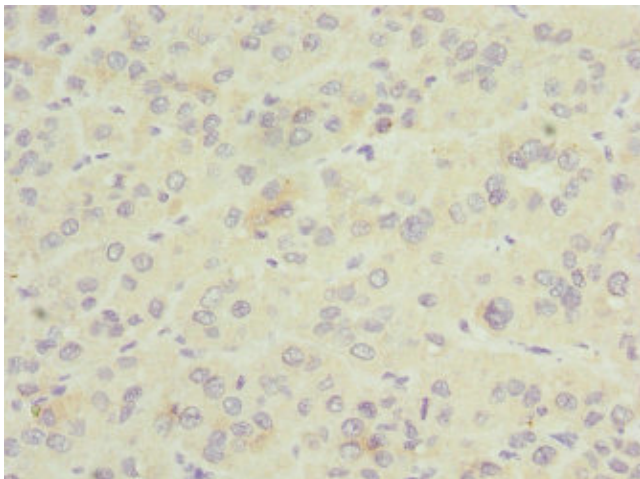
### GDAP1 Rabbit Polyclonal Antibody

#### Product data:

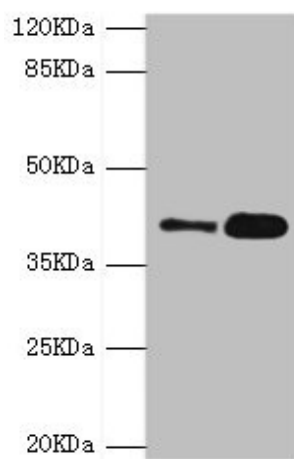
Product Type:	Primary Antibodies
Applications:	IHC, WB
Recommended Dilution:	Recommended dilution: WB:1:1000-1:5000, IHC:1:20-1:200
Reactivity:	Mouse, Human
Host:	Rabbit
Isotype:	IgG
Clonality:	Polyclonal
Immunogen:	Recombinant Human Ganglioside-induced differentiation-associated protein 1 protein (1-225AA)
Formulation:	PBS with 0.02% sodium azide, 50% glycerol, pH7.3.
Concentration:	lot specific
Purification:	Antigen Affinity Purified
Conjugation:	Unconjugated
Storage:	Upon receipt, store at -20°C or -80°C. Avoid repeated freeze.
Stability:	1 year from dispatch.
Database Link:	<a href="#">Q8TB36</a>
Background:	Regulates the mitochondrial network by promoting mitochondrial fission.



[View online »](#)

**Product images:**

Immunohistochemistry of paraffin-embedded human liver cancer using TA387756 at dilution of 1:100



Western blot  
All lanes: GDAP1 antibody at 4.15 $\mu$ g/ml  
Lane 1: MCF-7 whole cell lysate  
Lane 2: Mouse brain tissue  
Secondary  
Goat polyclonal to rabbit IgG at 1/10000 dilution  
Predicted band size: 42, 34 kDa  
Observed band size: 42 kDa