

## Product datasheet for **TA387755M**

### GSDMB Rabbit Polyclonal Antibody

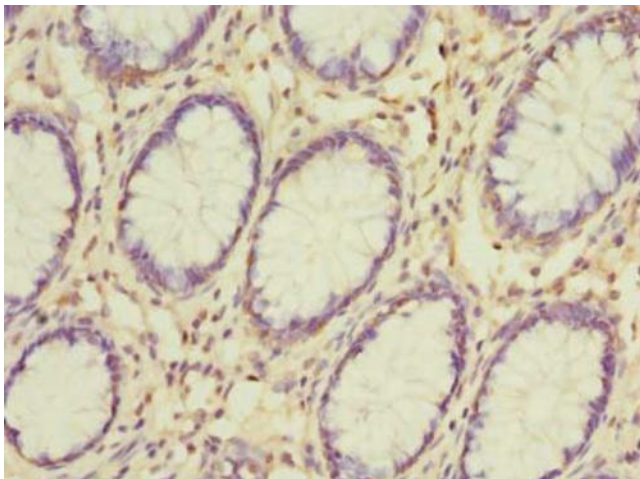
#### Product data:

Product Type:	Primary Antibodies
Applications:	IHC, WB
Recommended Dilution:	Recommended dilution: WB:1:500-1:2000, IHC:1:20-1:200
Reactivity:	Human
Host:	Rabbit
Isotype:	IgG
Clonality:	Polyclonal
Immunogen:	Recombinant Human Gasdermin-B protein (63-310AA)
Formulation:	Preservative: 0.03% Proclin 300 Constituents: 50% Glycerol, 0.01M PBS, PH 7.4
Concentration:	lot specific
Purification:	>95%, Protein G purified
Conjugation:	Unconjugated
Storage:	Upon receipt, store at -20°C or -80°C. Avoid repeated freeze.
Stability:	1 year from dispatch.
Database Link:	<a href="#">Q8TAX9</a>
Background:	May play a role as secretory or metabolic product involved in secretory pathway. May also play a role in achieving and maintaining the final differentiation state of epithelial cells.



[View online »](#)

## Product images:



Immunohistochemistry of paraffin-embedded human colon cancer using [TA387755] at dilution of 1:100



Western blot  
All lanes: GSDMB antibody at 8µg/ml + Colo320 whole cell lysate  
Secondary  
Goat polyclonal to rabbit IgG at 1/10000 dilution  
Predicted band size: 47, 46, 48, 19 kDa  
Observed band size: 47 kDa