

Product datasheet for **TA387754M**

STOML3 Rabbit Polyclonal Antibody

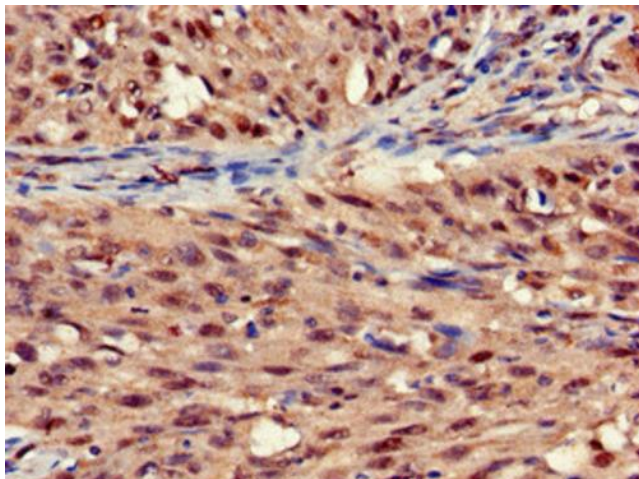
Product data:

Product Type:	Primary Antibodies
Applications:	IF, IHC, WB
Recommended Dilution:	Recommended dilution: WB:1:500-1:5000, IHC:1:20-1:200, IF:1:50-1:200
Reactivity:	Mouse, Rat, Human
Host:	Rabbit
Isotype:	IgG
Clonality:	Polyclonal
Immunogen:	Recombinant Human Stomatin-like protein 3 protein (205-291AA)
Formulation:	Preservative: 0.03% Proclin 300 Constituents: 50% Glycerol, 0.01M PBS, pH 7.4
Concentration:	lot specific
Purification:	>95%, Protein G purified
Conjugation:	Unconjugated
Storage:	Upon receipt, store at -20°C or -80°C. Avoid repeated freeze.
Stability:	1 year from dispatch.
Database Link:	Q8TAV4
Background:	Required for the function of many mechanoreceptors. Modulate mechanotransduction channels and acid-sensing ion channels (ASIC) proteins. Potentiates PIEZO1 and PIEZO2 function by increasing their sensitivity to mechanical stimulations.

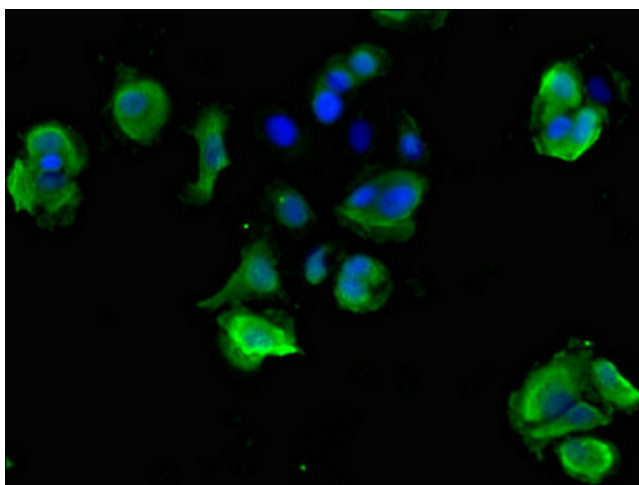


[View online »](#)

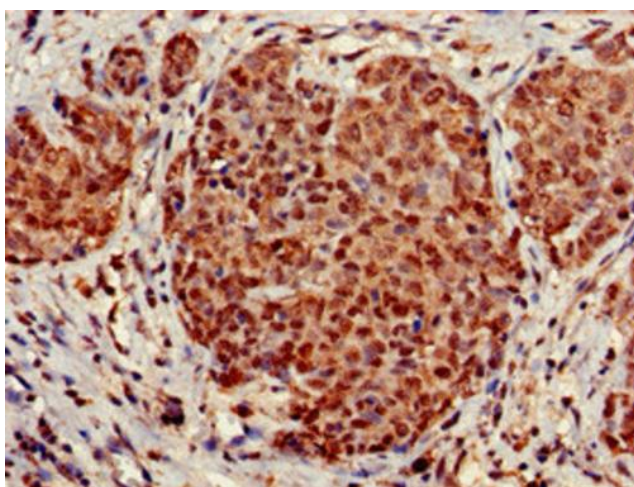
Product images:



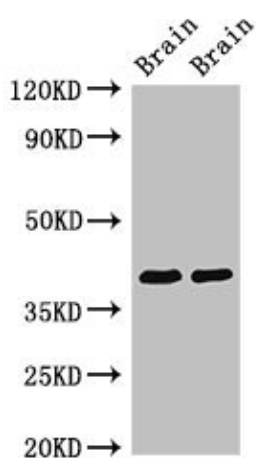
Immunohistochemistry of paraffin-embedded human lung cancer using [TA387754] at dilution of 1:100



Immunofluorescent analysis of MCF-7 cells using [TA387754] at dilution of 1:100 and Alexa Fluor 488-conjugated AffiniPure Goat Anti-Rabbit IgG(H+L)



Immunohistochemistry of paraffin-embedded human ovarian cancer using [TA387754] at dilution of 1:100



Western Blot
Positive WB detected in: Rat brain tissue, Mouse brain tissue
All lanes: STOML3 antibody at 3.4µg/ml
Secondary
Goat polyclonal to rabbit IgG at 1/50000 dilution
Predicted band size: 33, 32 kDa
Observed band size: 40 kDa