

Product datasheet for **TA387752M**

RDM1 Rabbit Polyclonal Antibody

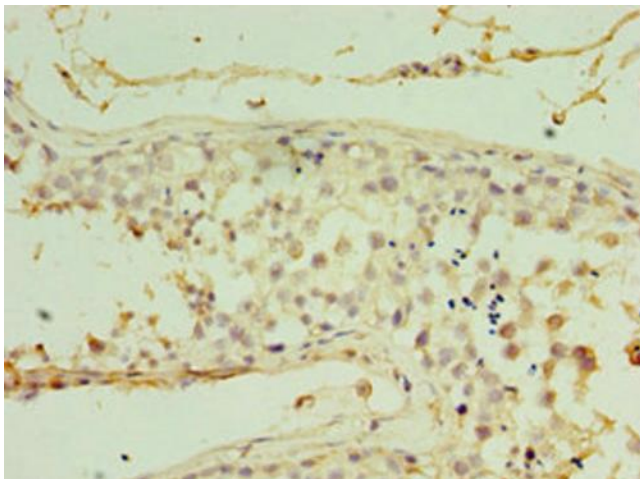
Product data:

Product Type:	Primary Antibodies
Applications:	IHC, WB
Recommended Dilution:	Recommended dilution: WB:1:200-1:1000, IHC:1:20-1:200
Reactivity:	Human
Host:	Rabbit
Isotype:	IgG
Clonality:	Polyclonal
Immunogen:	Recombinant Human RAD52 motif-containing protein 1 protein (125-284AA)
Formulation:	PBS with 0.02% sodium azide, 50% glycerol, pH7.3.
Concentration:	lot specific
Purification:	Antigen Affinity Purified
Conjugation:	Unconjugated
Storage:	Upon receipt, store at -20°C or -80°C. Avoid repeated freeze.
Stability:	1 year from dispatch.
Database Link:	Q8NG50
Background:	May confer resistance to the antitumor agent cisplatin. Binds to DNA and RNA.

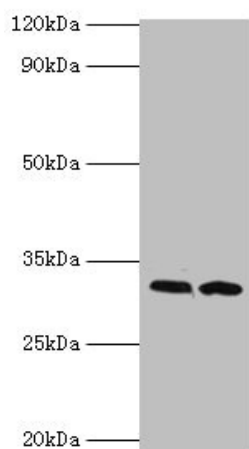


[View online »](#)

Product images:



Immunohistochemistry of paraffin-embedded human testis tissue using [TA387752] at dilution of 1:100



Western blot
All lanes: RDM1 antibody at 4 μ g/ml
Lane 1: PC-3 whole cell lysate
Lane 2: MCF-7 whole cell lysate
Secondary
Goat polyclonal to rabbit IgG at 1/10000 dilution
Predicted band size: 32, 30, 16, 14, 29, 26, 9, 13, 19, 27 kDa
Observed band size: 32 kDa