

## Product datasheet for **TA387752**

### RDM1 Rabbit Polyclonal Antibody

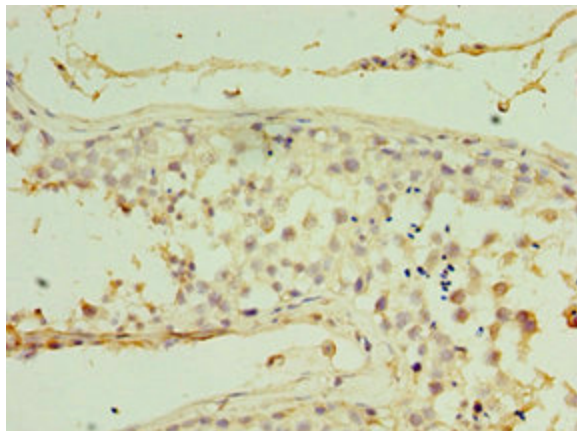
#### Product data:

Product Type:	Primary Antibodies
Applications:	IHC, WB
Recommended Dilution:	Recommended dilution: WB:1:200-1:1000, IHC:1:20-1:200
Reactivity:	Human
Host:	Rabbit
Isotype:	IgG
Clonality:	Polyclonal
Immunogen:	Recombinant Human RAD52 motif-containing protein 1 protein (125-284AA)
Formulation:	PBS with 0.02% sodium azide, 50% glycerol, pH7.3.
Concentration:	lot specific
Purification:	Antigen Affinity Purified
Conjugation:	Unconjugated
Storage:	Upon receipt, store at -20°C or -80°C. Avoid repeated freeze.
Stability:	1 year from dispatch.
Database Link:	<a href="#">Q8NG50</a>
Background:	May confer resistance to the antitumor agent cisplatin. Binds to DNA and RNA.

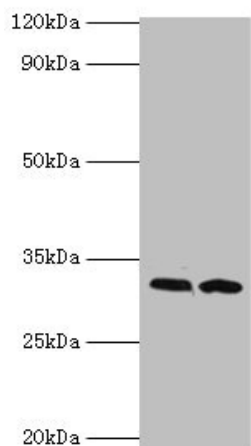


[View online »](#)

**Product images:**



Immunohistochemistry of paraffin-embedded human testis tissue using TA387752 at dilution of 1:100



Western blot  
 All lanes: RDM1 antibody at 4µg/ml  
 Lane 1: PC-3 whole cell lysate  
 Lane 2: MCF-7 whole cell lysate  
 Secondary  
 Goat polyclonal to rabbit IgG at 1/10000 dilution  
 Predicted band size: 32, 30, 16, 14, 29, 26, 9, 13, 19, 27 kDa  
 Observed band size: 32 kDa