

Product datasheet for **TA387745M**

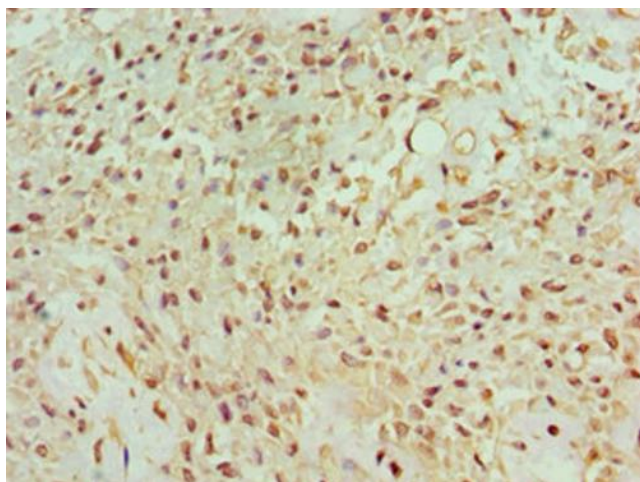
BANP Rabbit Polyclonal Antibody

Product data:

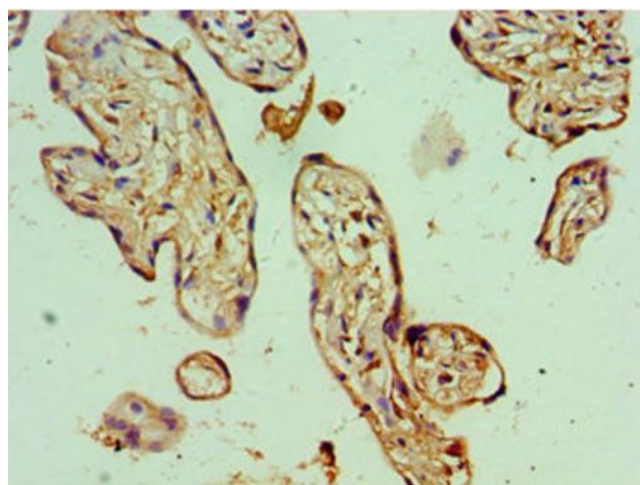
| | |
|-----------------------|--|
| Product Type: | Primary Antibodies |
| Applications: | IHC, WB |
| Recommended Dilution: | Recommended dilution: WB:1:500-1:2000, IHC:1:20-1:200 |
| Reactivity: | Human |
| Host: | Rabbit |
| Isotype: | IgG |
| Clonality: | Polyclonal |
| Immunogen: | Recombinant Human Protein BANP protein (1-260AA) |
| Formulation: | PBS with 0.02% sodium azide, 50% glycerol, pH7.3. |
| Concentration: | lot specific |
| Purification: | Antigen Affinity Purified |
| Conjugation: | Unconjugated |
| Storage: | Upon receipt, store at -20°C or -80°C. Avoid repeated freeze. |
| Stability: | 1 year from dispatch. |
| Database Link: | <u>Q8N9N5</u> |
| Background: | Controls V(D)J recombination during T-cell development by repressing T-cell receptor (TCR) beta enhancer function. Binds to scaffold/matrix attachment region beta (S/MARbeta), an ATC-rich DNA sequence located upstream of the TCR beta enhancer. Represses cyclin D1 transcription by recruiting HDAC1 to its promoter, thereby diminishing H3K9ac, H3S10ph and H4K8ac levels. Promotes TP53 'Ser-15' phosphorylation and nuclear accumulation, which causes cell cycle arrest. |



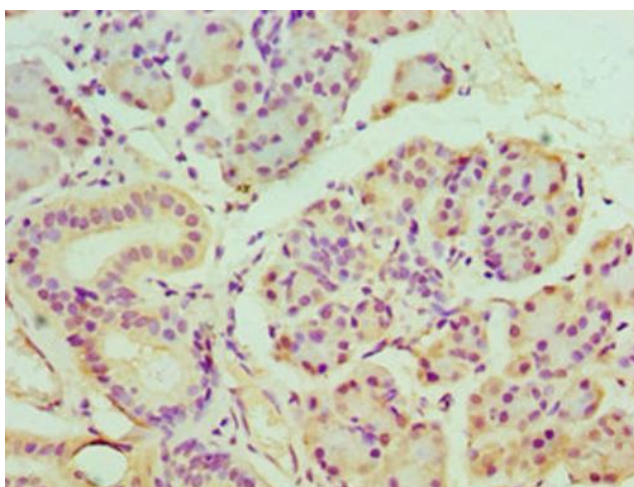
[View online »](#)

Product images:


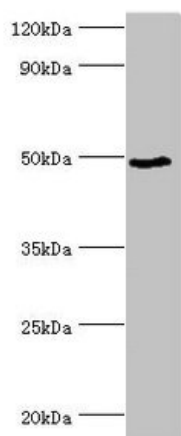
Immunohistochemistry of paraffin-embedded human breast cancer using [TA387745] at dilution of 1:100



Immunohistochemistry of paraffin-embedded human placenta tissue using [TA387745] at dilution of 1:100



Immunohistochemistry of paraffin-embedded human pancreatic tissue using [TA387745] at dilution of 1:100



Western blot
All lanes: BANP antibody at 6 μ g/ml + HepG2 whole cell lysate
Secondary
Goat polyclonal to rabbit IgG at 1/10000 dilution
Predicted band size: 57, 52, 49, 54, 55, 51, 56 kDa
Observed band size: 49 kDa