

## Product datasheet for **TA387741M**

### LILRA3 Rabbit Polyclonal Antibody

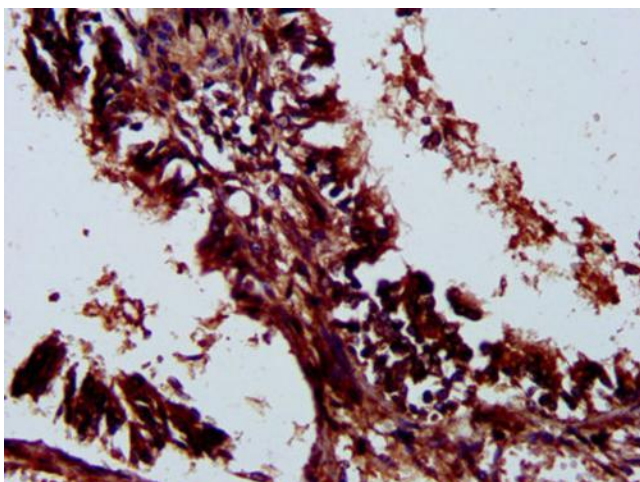
#### Product data:

|                       |   |
|-----------------------|---|
| Product Type:         | Primary Antibodies  |
| Applications:         | IHC, WB   |
| Recommended Dilution: | Recommended dilution: WB:1:500-1:5000, IHC:1:200-1:500  |
| Reactivity:           | Human   |
| Host:                 | Rabbit  |
| Isotype:              | IgG   |
| Clonality:            | Polyclonal  |
| Immunogen:            | Recombinant Human Leukocyte immunoglobulin-like receptor subfamily A member 3 protein (222-313AA)   |
| Formulation:          | Preservative: 0.03% Proclin 300<br>Constituents: 50% Glycerol, 0.01M PBS, pH 7.4  |
| Concentration:        | lot specific  |
| Purification:         | >95%, Protein G purified  |
| Conjugation:          | Unconjugated  |
| Storage:              | Upon receipt, store at -20°C or -80°C. Avoid repeated freeze.   |
| Stability:            | 1 year from dispatch.   |
| Database Link:        | <a href="#">Q8N6C8</a>  |
| Background:           | Acts as soluble receptor for class I MHC antigens. Binds both classical and non-classical HLA class I molecules but with reduced affinities compared to LILRB1 or LILRB2. Binds with high affinity to the surface of monocytes, leading to abolish LPS-induced TNF-alpha production by monocytes. |

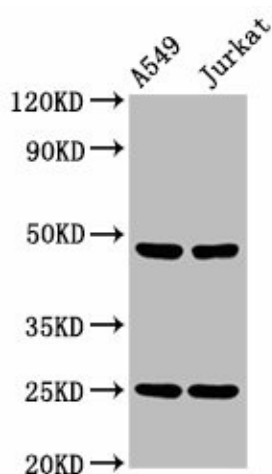


[View online »](#)

## Product images:



IHC image of [TA387741] diluted at 1:300 and staining in paraffin-embedded human lung tissue performed on a Leica Bond™ system. After dewaxing and hydration, antigen retrieval was mediated by high pressure in a citrate buffer (pH 6.0). Section was blocked with 10% normal goat serum 30min at RT. Then primary antibody (1% BSA) was incubated at 4°C overnight. The primary is detected by a biotinylated secondary antibody and visualized using an HRP conjugated SP system.



Western Blot  
Positive WB detected in: A549 whole cell lysate, Jurkat whole cell lysate  
All lanes: LILRA3 antibody at 4.2µg/ml  
Secondary  
Goat polyclonal to rabbit IgG at 1/50000 dilution  
Predicted band size: 48, 41, 50 kDa  
Observed band size: 48 kDa