

## Product datasheet for **TA387739M**

### **KIF2B Rabbit Polyclonal Antibody**

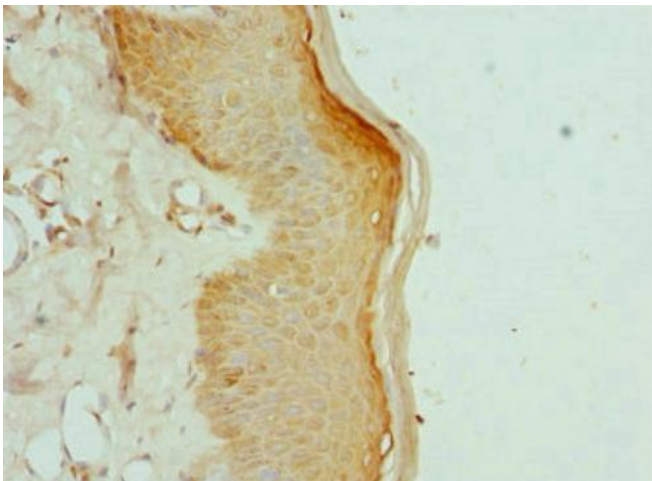
#### **Product data:**

Product Type:	Primary Antibodies
Applications:	IHC, WB
Recommended Dilution:	Recommended dilution: WB:1:1000-1:5000, IHC:1:20-1:200
Reactivity:	Mouse, Human
Host:	Rabbit
Isotype:	IgG
Clonality:	Polyclonal
Immunogen:	Recombinant Human Kinesin-like protein KIF2B protein (544-673AA)
Formulation:	PBS with 0.02% sodium azide, 50% glycerol, pH7.3.
Concentration:	lot specific
Purification:	Antigen Affinity Purified
Conjugation:	Unconjugated
Storage:	Upon receipt, store at -20°C or -80°C. Avoid repeated freeze.
Stability:	1 year from dispatch.
Database Link:	<a href="#"><u>Q8N4N8</u></a>
Background:	Plus end-directed microtubule-dependent motor required for spindle assembly and chromosome movement. Has microtubule depolymerization activity.

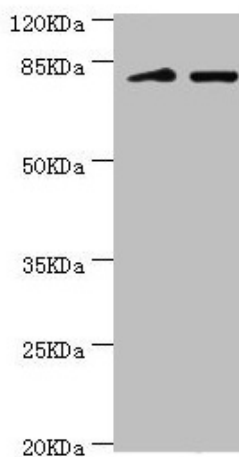


[View online »](#)

## Product images:



Immunohistochemistry of paraffin-embedded human skin tissue using [TA387739] at dilution of 1:100



Western blot  
All lanes: KIF2B antibody at 3.59µg/ml  
Lane 1: Mouse lung tissue  
Lane 2: 293T whole cell lysate  
Secondary  
Goat polyclonal to rabbit IgG at 1/10000 dilution  
Predicted band size: 76 kDa  
Observed band size: 80, 150 kDa