

## Product datasheet for **TA387738**

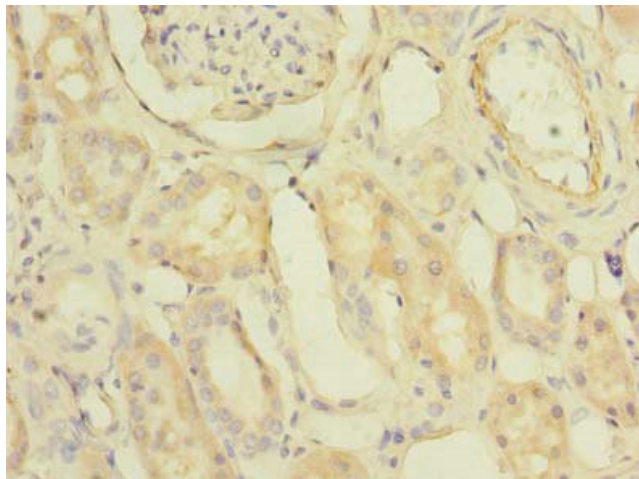
### PDCL2 Rabbit Polyclonal Antibody

#### Product data:

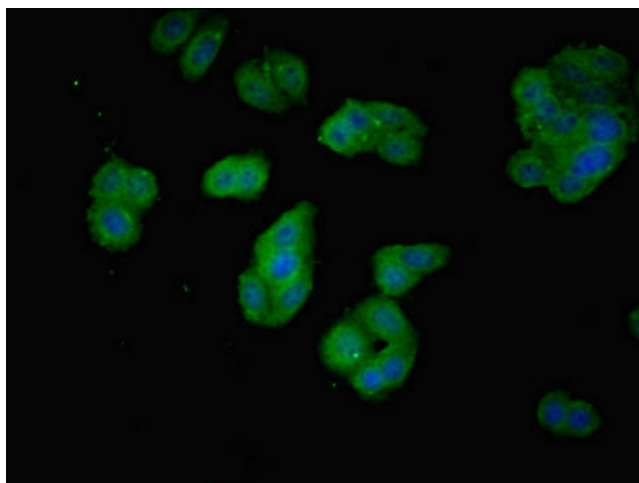
Product Type:	Primary Antibodies
Applications:	IF, IHC, WB
Recommended Dilution:	Recommended dilution: WB:1:500-1:2000, IHC:1:20-1:200, IF:1:50-1:200
Reactivity:	Rat, Human
Host:	Rabbit
Isotype:	IgG
Clonality:	Polyclonal
Immunogen:	Recombinant Human Phosducin-like protein 2 protein (1-241AA)
Formulation:	Preservative: 0.03% Proclin 300 Constituents: 50% Glycerol, 0.01M PBS, PH 7.4
Concentration:	lot specific
Purification:	>95%, Protein G purified
Conjugation:	Unconjugated
Storage:	Upon receipt, store at -20°C or -80°C. Avoid repeated freeze.
Stability:	1 year from dispatch.
Database Link:	<a href="#">Q8N4E4</a>
Background:	May play a role in germ cell maturation.



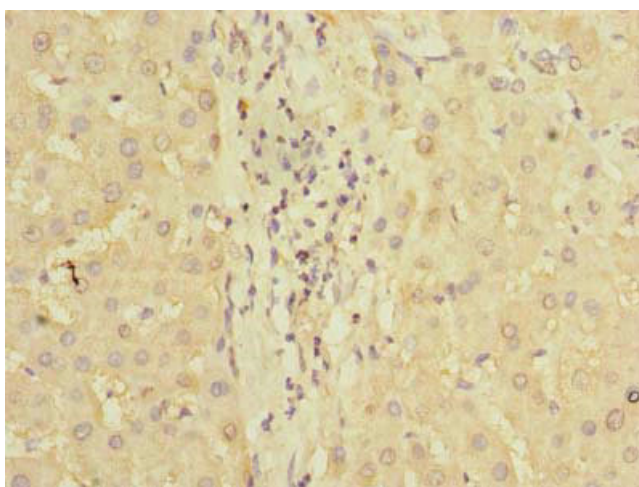
[View online »](#)

**Product images:**

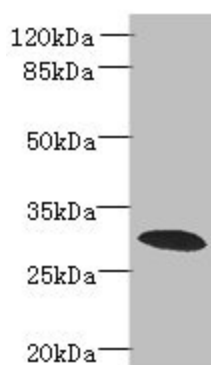
Immunohistochemistry of paraffin-embedded human kidney tissue using TA387738 at dilution of 1:100



Immunofluorescent analysis of HepG2 cells using TA387738 at dilution of 1:100 and Alexa Fluor 488-conjugated AffiniPure Goat Anti-Rabbit IgG(H+L)



Immunohistochemistry of paraffin-embedded human liver tissue using TA387738 at dilution of 1:100



Western blot  
All lanes: PDCL2 antibody at 4 $\mu$ g/ml + Rat gonadal tissue  
Secondary  
Goat polyclonal to rabbit IgG at 1/10000 dilution  
Predicted band size: 29 kDa  
Observed band size: 29 kDa