

## Product datasheet for **TA387737M**

### LIX1 Rabbit Polyclonal Antibody

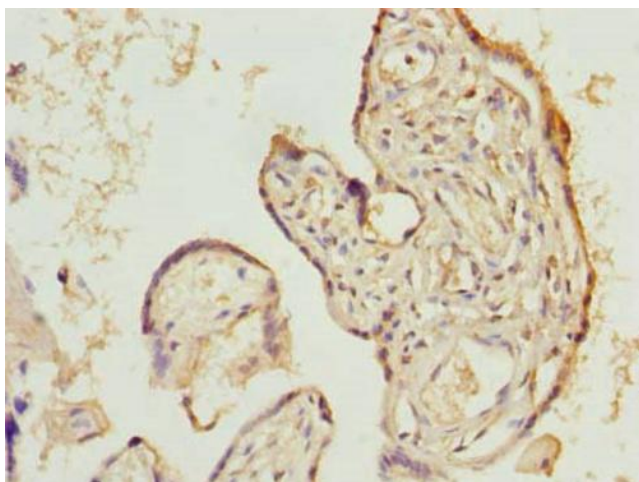
#### Product data:

|                       |  |
|-----------------------|--|
| Product Type:         | Primary Antibodies   |
| Applications:         | IF, IHC, WB  |
| Recommended Dilution: | Recommended dilution: WB:1:500-1:2000, IHC:1:20-1:200, IF:1:10-1:100             |
| Reactivity:           | Mouse, Human   |
| Host:                 | Rabbit   |
| Isotype:              | IgG  |
| Clonality:            | Polyclonal   |
| Immunogen:            | Recombinant Human Protein limb expression 1 homolog protein (1-282AA)            |
| Formulation:          | Preservative: 0.03% Proclin 300<br>Constituents: 50% Glycerol, 0.01M PBS, PH 7.4 |
| Concentration:        | lot specific   |
| Purification:         | Antigen Affinity Purified  |
| Conjugation:          | Unconjugated   |
| Storage:              | Upon receipt, store at -20°C or -80°C. Avoid repeated freeze.                    |
| Stability:            | 1 year from dispatch.  |
| Database Link:        | <a href="#">Q8N485</a>   |
| Background:           | cytoplasm, autophagosome maturation, autophagy                                   |

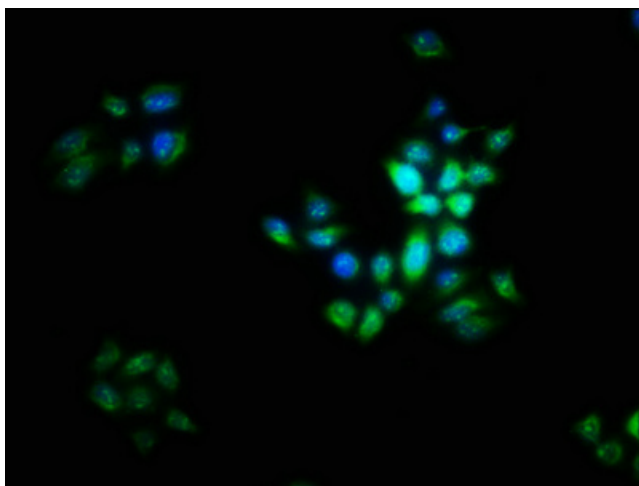


[View online »](#)

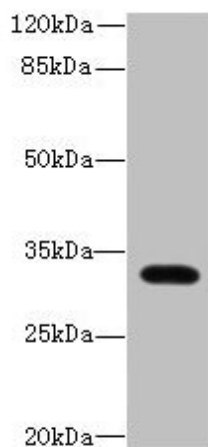
## Product images:



Immunohistochemistry of paraffin-embedded human placenta tissue using [TA387737] at dilution of 1:100



Immunofluorescence staining of PC-3 cells with [TA387737] at 1:16, counter-stained with DAPI. The cells were fixed in 4% formaldehyde, permeabilized using 0.2% Triton X-100 and blocked in 10% normal Goat Serum. The cells were then incubated with the antibody overnight at 4°C. The secondary antibody was Alexa Fluor 488-conjugated AffiniPure Goat Anti-Rabbit IgG(H+L).



Western blot

All lanes: LIX1 antibody at 0.5µg/ml + Mouse heart tissue

Secondary

Goat polyclonal to rabbit IgG at 1/10000 dilution

Predicted band size: 32 kDa

Observed band size: 32 kDa