

## Product datasheet for **TA387732M**

### SPAG16 Rabbit Polyclonal Antibody

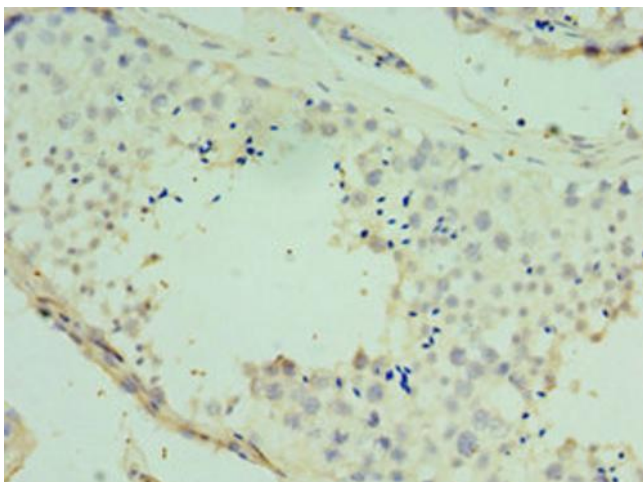
#### Product data:

Product Type:	Primary Antibodies
Applications:	IHC, WB
Recommended Dilution:	Recommended dilution: WB:1:500-1:2000, IHC:1:20-1:200
Reactivity:	Mouse, Human
Host:	Rabbit
Isotype:	IgG
Clonality:	Polyclonal
Immunogen:	Recombinant Human Sperm-associated antigen 16 protein (1-183AA)
Formulation:	PBS with 0.02% sodium azide, 50% glycerol, pH7.3.
Concentration:	lot specific
Purification:	Antigen Affinity Purified
Conjugation:	Unconjugated
Storage:	Upon receipt, store at -20°C or -80°C. Avoid repeated freeze.
Stability:	1 year from dispatch.
Database Link:	<a href="#">Q8N0X2</a>
Background:	Necessary for sperm flagellar function. Plays a role in motile ciliogenesis. May help to recruit STK36 to the cilium or apical surface of the cell to initiate subsequent steps of construction of the central pair apparatus of motile cilia .

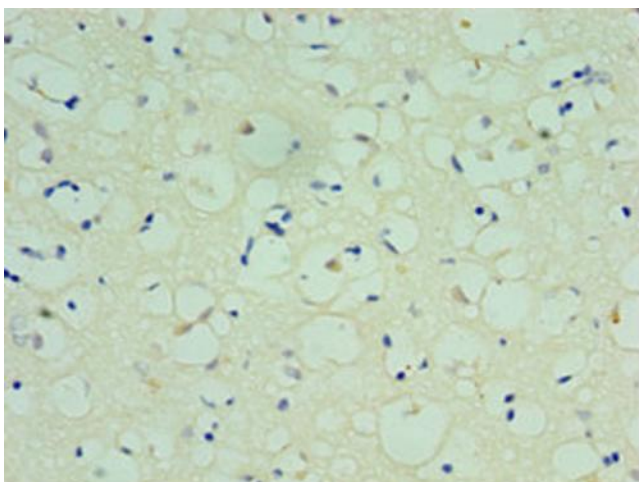


[View online »](#)

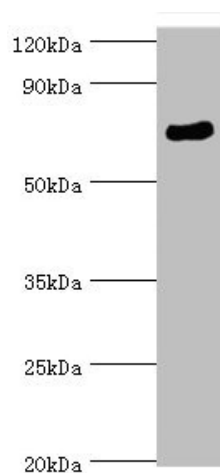
## Product images:



Immunohistochemistry of paraffin-embedded human testis tissue using [TA387732] at dilution of 1:100



Immunohistochemistry of paraffin-embedded human brain tissue using [TA387732] at dilution of 1:100



Western blot

All lanes: SPAG16 antibody at 6µg/ml + Mouse brain tissue

Secondary

Goat polyclonal to rabbit IgG at 1/10000 dilution

Predicted band size: 71, 51, 30, 21, 40 kDa

Observed band size: 71 kDa