

## Product datasheet for **TA387729M**

### NELFCD Rabbit Polyclonal Antibody

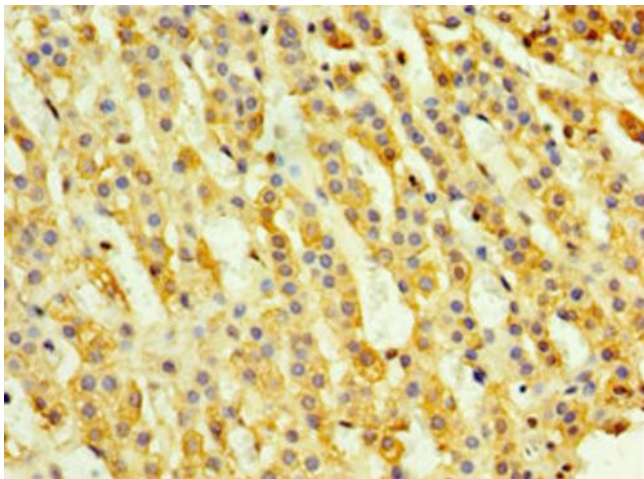
#### Product data:

Product Type:	Primary Antibodies
Applications:	IHC, WB
Recommended Dilution:	Recommended dilution: WB:1:200-1:1000, IHC:1:20-1:200
Reactivity:	Human
Host:	Rabbit
Isotype:	IgG
Clonality:	Polyclonal
Immunogen:	Recombinant Human Negative elongation factor C/D protein (346-590AA)
Formulation:	PBS with 0.02% sodium azide, 50% glycerol, pH7.3.
Concentration:	lot specific
Purification:	Antigen Affinity Purified
Conjugation:	Unconjugated
Storage:	Upon receipt, store at -20°C or -80°C. Avoid repeated freeze.
Stability:	1 year from dispatch.
Database Link:	<a href="#">Q8IXH7</a>
Background:	Essential component of the NELF complex, a complex that negatively regulates the elongation of transcription by RNA polymerase II. The NELF complex, which acts via an association with the DSIF complex and causes transcriptional pausing, is counteracted by the P-TEFb kinase complex.

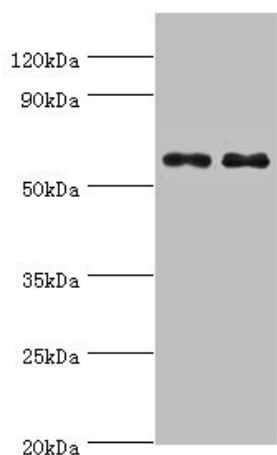


[View online »](#)

## Product images:



Immunohistochemistry of paraffin-embedded human adrenal gland tissue using [TA387729] at dilution of 1:100



Western blot  
All lanes: NELFCD antibody at 8 $\mu$ g/ml  
Lane 1: Jurkat whole cell lysate  
Lane 2: Hela whole cell lysate  
Secondary  
Goat polyclonal to rabbit IgG at 1/10000 dilution  
Predicted band size: 67, 23, 66 kDa  
Observed band size: 67 kDa