

## Product datasheet for **TA387728**

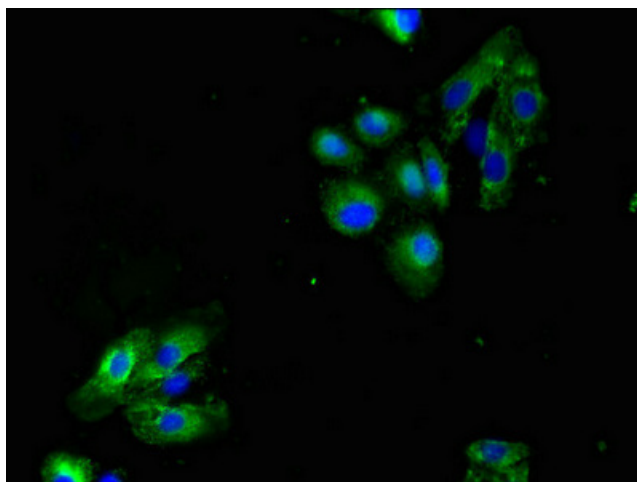
### LAX1 Rabbit Polyclonal Antibody

#### Product data:

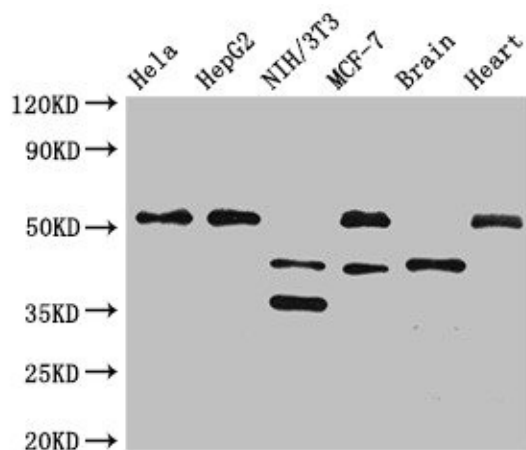
Product Type:	Primary Antibodies
Applications:	IF, WB
Recommended Dilution:	Recommended dilution: WB:1:500-1:5000, IF:1:50-1:200
Reactivity:	Mouse, Rat, Human
Host:	Rabbit
Isotype:	IgG
Clonality:	Polyclonal
Immunogen:	Recombinant Human Lymphocyte transmembrane adapter 1 protein (107-298AA)
Formulation:	Preservative: 0.03% Proclin 300 Constituents: 50% Glycerol, 0.01M PBS, pH 7.4
Concentration:	lot specific
Purification:	>95%, Protein G purified
Conjugation:	Unconjugated
Storage:	Upon receipt, store at -20°C or -80°C. Avoid repeated freeze.
Stability:	1 year from dispatch.
Database Link:	<a href="#">Q8I WV1</a>
Background:	Negatively regulates TCR (T-cell antigen receptor)-mediated signaling in T-cells and BCR (B-cell antigen receptor)-mediated signaling in B-cells.



[View online »](#)

**Product images:**


Immunofluorescent analysis of HepG2 cells using TA387728 at dilution of 1:100 and Alexa Fluor 488-conjugated AffiniPure Goat Anti-Rabbit IgG(H+L)



Western Blot  
 Positive WB detected in: HeLa whole cell lysate, HepG2 whole cell lysate, NIH/3T3 whole cell lysate, MCF-7 whole cell lysate, Mouse brain tissue, Rat heart tissue  
 All lanes: LAX1 antibody at 2.7µg/ml  
 Secondary  
 Goat polyclonal to rabbit IgG at 1/50000 dilution  
 Predicted band size: 45, 36, 43 kDa  
 Observed band size: 51, 45, 36 kDa