

## Product datasheet for **TA387725**

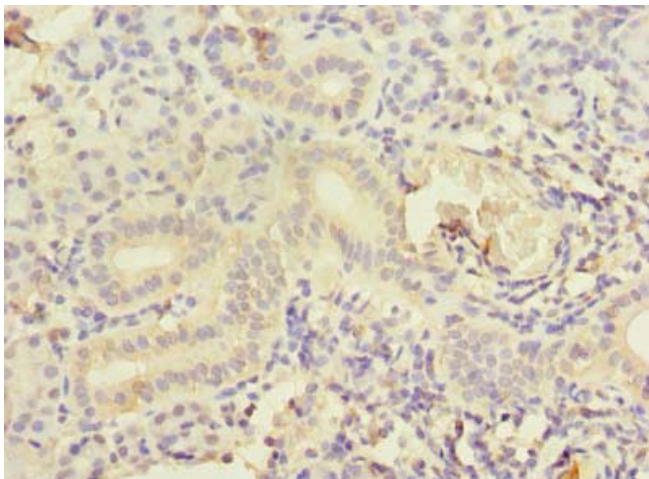
### CCNJL Rabbit Polyclonal Antibody

#### Product data:

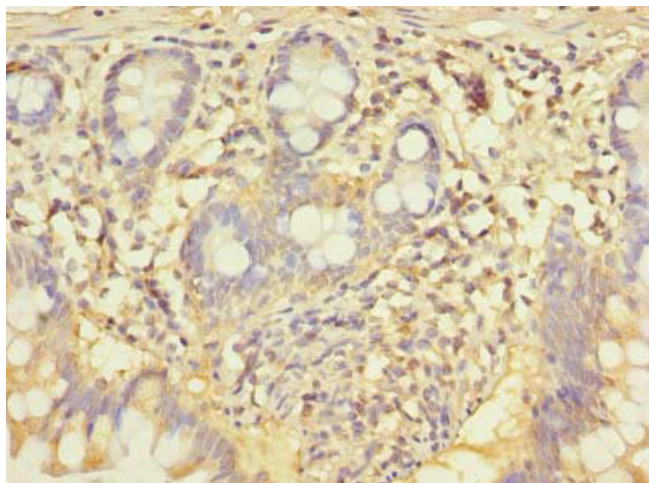
Product Type:	Primary Antibodies
Applications:	IHC, WB
Recommended Dilution:	Recommended dilution: WB:1:500-1:2000, IHC:1:20-1:200
Reactivity:	Mouse, Human
Host:	Rabbit
Isotype:	IgG
Clonality:	Polyclonal
Immunogen:	Recombinant Human Cyclin-J-like protein (315-435AA)
Formulation:	Preservative: 0.03% Proclin 300 Constituents: 50% Glycerol, 0.01M PBS, PH 7.4
Concentration:	lot specific
Purification:	>95%, Protein G purified
Conjugation:	Unconjugated
Storage:	Upon receipt, store at -20°C or -80°C. Avoid repeated freeze.
Stability:	1 year from dispatch.
Database Link:	<a href="#">Q8IV13</a>



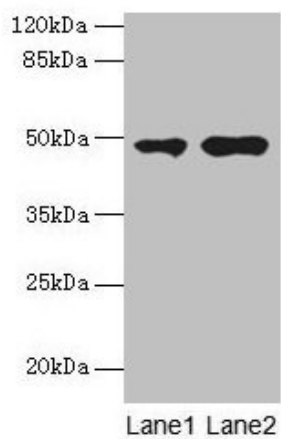
[View online »](#)

**Product images:**

Immunohistochemistry of paraffin-embedded human pancreatic tissue using TA387725 at dilution of 1:100



Immunohistochemistry of paraffin-embedded human small intestine tissue using TA387725 at dilution of 1:100

**Western blot**

All lanes: CCNJL antibody at 3 $\mu$ g/ml

Lane 1: U251 whole cell lysate

Lane 2: Mouse liver tissue

Secondary

Goat polyclonal to rabbit IgG at 1/10000 dilution

Predicted band size: 49, 19 kDa

Observed band size: 49 kDa