

Product datasheet for **TA387714M**

TIPARP Rabbit Polyclonal Antibody

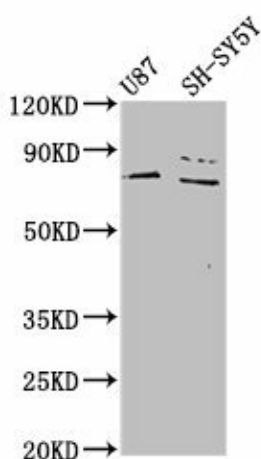
Product data:

Product Type:	Primary Antibodies
Applications:	IHC, WB
Recommended Dilution:	Recommended dilution: WB:1:500-1:5000, IHC:1:200-1:500
Reactivity:	Human
Host:	Rabbit
Isotype:	IgG
Clonality:	Polyclonal
Immunogen:	Recombinant Human TCDD-inducible poly [ADP-ribose] polymerase protein (74-178AA)
Formulation:	Preservative: 0.03% Proclin 300 Constituents: 50% Glycerol, 0.01M PBS, pH 7.4
Concentration:	lot specific
Purification:	>95%, Protein G purified
Conjugation:	Unconjugated
Storage:	Upon receipt, store at -20°C or -80°C. Avoid repeated freeze.
Stability:	1 year from dispatch.
Database Link:	Q7Z3E1
Background:	Poly [ADP-ribose] polymerase using NAD(+) as a substrate to transfer ADP-ribose onto glutamic acid residues of a protein acceptor; repeated rounds of ADP-ribosylation leads to the formation of poly(ADPribose) chains on the protein, thereby altering the function of the target protein. May play a role in the adaptive response to chemical exposure (TCDD) and thereby mediates certain effects of the chemicals (By similarity).



[View online »](#)

Product images:



Western Blot

Positive WB detected in: U87 whole cell lysate, SH-SY5Y whole cell lysate

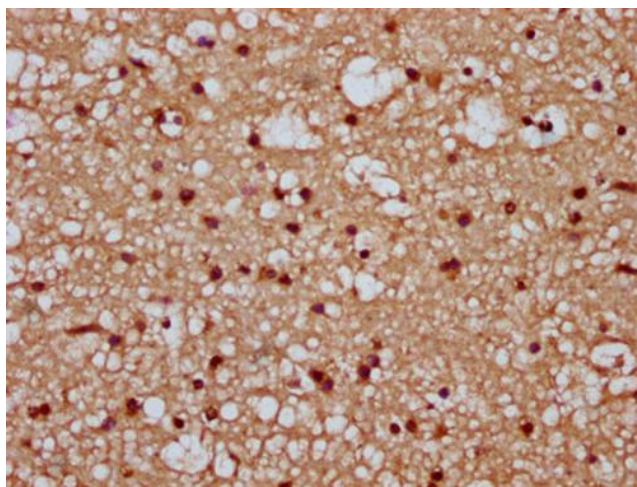
All lanes: TIPARP antibody at 4.6µg/ml

Secondary

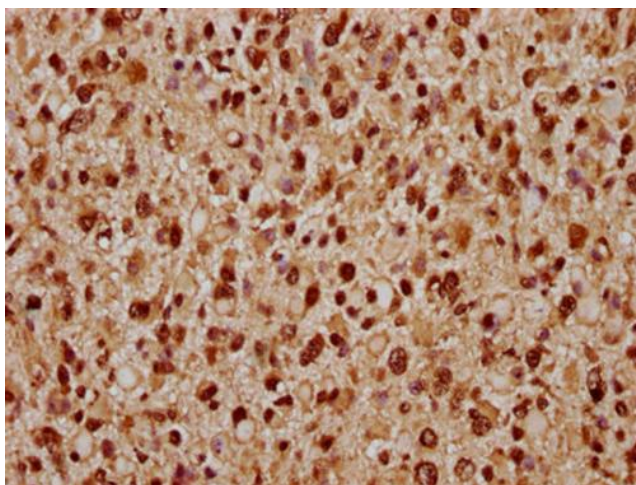
Goat polyclonal to rabbit IgG at 1/50000 dilution

Predicted band size: 77 kDa

Observed band size: 77 kDa



IHC image of [TA387714] diluted at 1:300 and staining in paraffin-embedded human brain tissue performed on a Leica Bond™ system. After dewaxing and hydration, antigen retrieval was mediated by high pressure in a citrate buffer (pH 6.0). Section was blocked with 10% normal goat serum 30min at RT. Then primary antibody (1% BSA) was incubated at 4°C overnight. The primary is detected by a biotinylated secondary antibody and visualized using an HRP conjugated SP system.



IHC image of [TA387714] diluted at 1:300 and staining in paraffin-embedded human glioma performed on a Leica Bond™ system. After dewaxing and hydration, antigen retrieval was mediated by high pressure in a citrate buffer (pH 6.0). Section was blocked with 10% normal goat serum 30min at RT. Then primary antibody (1% BSA) was incubated at 4°C overnight. The primary is detected by a biotinylated secondary antibody and visualized using an HRP conjugated SP system.