

Product datasheet for **TA387705M**

TMEM214 Rabbit Polyclonal Antibody

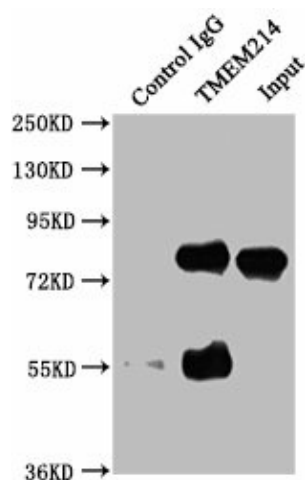
Product data:

Product Type:	Primary Antibodies
Applications:	IP, WB
Recommended Dilution:	Recommended dilution: WB:1:1000-1:5000, IP:1:200-1:2000
Reactivity:	Human
Host:	Rabbit
Isotype:	IgG
Clonality:	Polyclonal
Immunogen:	Recombinant Human Transmembrane protein 214 protein (2-236AA)
Formulation:	Preservative: 0.03% Proclin 300 Constituents: 50% Glycerol, 0.01M PBS, pH 7.4
Concentration:	lot specific
Purification:	>95%, Protein G purified
Conjugation:	Unconjugated
Storage:	Upon receipt, store at -20°C or -80°C. Avoid repeated freeze.
Stability:	1 year from dispatch.
Database Link:	Q6NUQ4
Background:	Critical mediator, in cooperation with CASP4, of endoplasmic reticulum-stress induced apoptosis. Required for the activation of CASP4 following endoplasmic reticulum stress.



[View online »](#)

Product images:

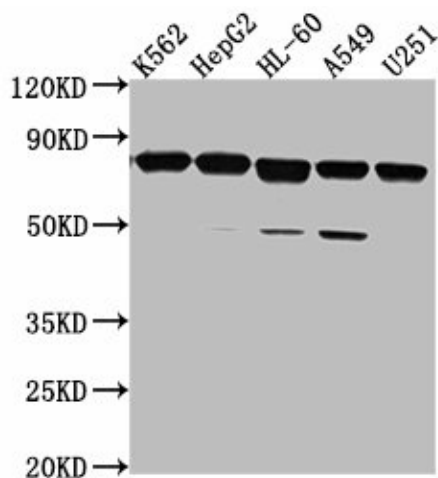


Immunoprecipitating TMEM214 in HepG2 whole cell lysate

Lane 1: Rabbit control IgG instead of [TA387705] in HepG2 whole cell lysate. For western blotting, a HRP-conjugated Protein G antibody was used as the secondary antibody (1/50000)

Lane 2: [TA387705] (5 μ g) + HepG2 whole cell lysate (0.5mg)

Lane 3: HepG2 whole cell lysate (20 μ g)



Western Blot

Positive WB detected in: K562 whole cell lysate, HepG2 whole cell lysate, HL-60 whole cell lysate, A549 whole cell lysate, U251 whole cell lysate

All lanes: TMEM214 antibody at 1:2000

Secondary

Goat polyclonal to rabbit IgG at 1/50000 dilution

Predicted band size: 78, 73 kDa

Observed band size: 78 kDa