

Product datasheet for **TA387704M**

KRT80 Rabbit Polyclonal Antibody

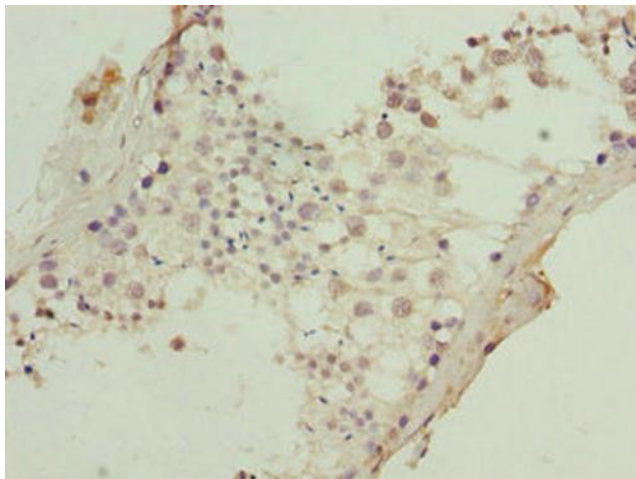
Product data:

Product Type:	Primary Antibodies
Applications:	IHC, WB
Recommended Dilution:	Recommended dilution: WB:1:1000-1:5000, IHC:1:20-1:200
Reactivity:	Mouse, Human
Host:	Rabbit
Isotype:	IgG
Clonality:	Polyclonal
Immunogen:	Recombinant Human Keratin, type II cytoskeletal 80 protein (1-300AA)
Formulation:	Preservative: 0.03% Proclin 300 Constituents: 50% Glycerol, 0.01M PBS, PH 7.4
Concentration:	lot specific
Purification:	>95%, Protein G purified
Conjugation:	Unconjugated
Storage:	Upon receipt, store at -20°C or -80°C. Avoid repeated freeze.
Stability:	1 year from dispatch.
Database Link:	Q6KB66
Background:	There are two types of cytoskeletal and microfibrillar keratin, I (acidic) and II (neutral to basic) (40-55 and 56-70 kDa, respectively).

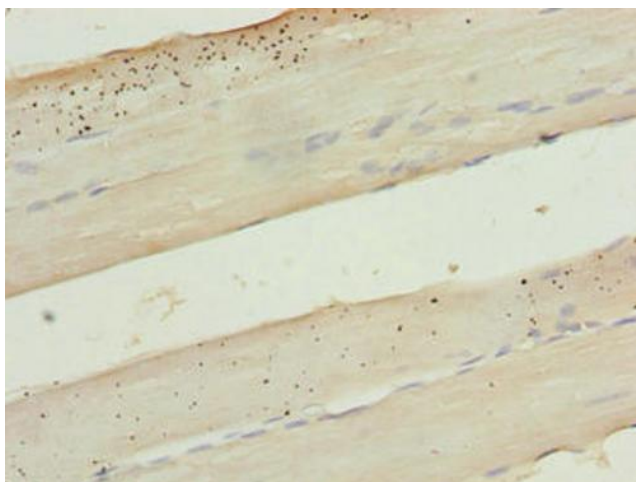


[View online »](#)

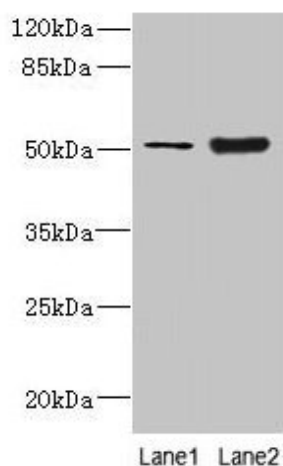
Product images:



Immunohistochemistry of paraffin-embedded human testis tissue using [TA387704] at dilution of 1:100



Immunohistochemistry of paraffin-embedded human skeletal muscle tissue using [TA387704] at dilution of 1:100



Western blot

All lanes: KRT80 antibody at 2 μ g/ml

Lane 1: A549 whole cell lysate

Lane 2: Mouse brain tissue

Secondary

Goat polyclonal to rabbit IgG at 1/10000 dilution

Predicted band size: 51, 48, 55 kDa

Observed band size: 51 kDa