

## Product datasheet for **TA387702M**

### **ANXA8L1 Rabbit Polyclonal Antibody**

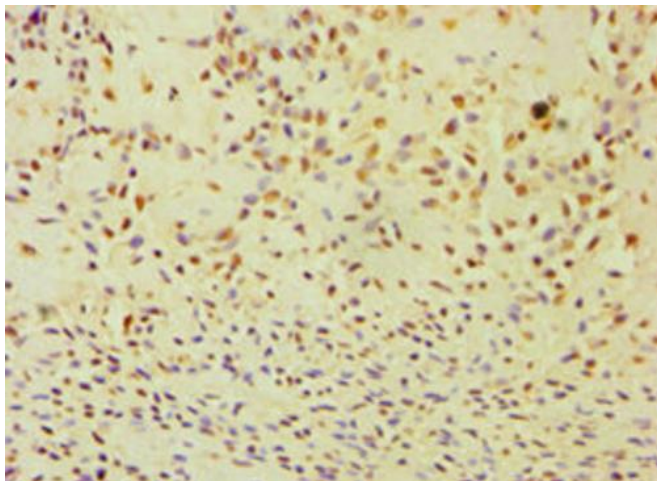
#### **Product data:**

|                       |   |
|-----------------------|---|
| Product Type:         | Primary Antibodies  |
| Applications:         | IHC, WB   |
| Recommended Dilution: | Recommended dilution: WB:1:200-1:1000, IHC:1:20-1:200         |
| Reactivity:           | Human   |
| Host:                 | Rabbit  |
| Isotype:              | IgG   |
| Clonality:            | Polyclonal  |
| Immunogen:            | Recombinant Human Annexin A8-like protein 1 protein (1-276AA) |
| Formulation:          | PBS with 0.02% sodium azide, 50% glycerol, pH7.3.             |
| Concentration:        | lot specific  |
| Purification:         | Antigen Affinity Purified                                     |
| Conjugation:          | Unconjugated  |
| Storage:              | Upon receipt, store at -20°C or -80°C. Avoid repeated freeze. |
| Stability:            | 1 year from dispatch.   |
| Database Link:        | <a href="#">Q5VT79</a>  |

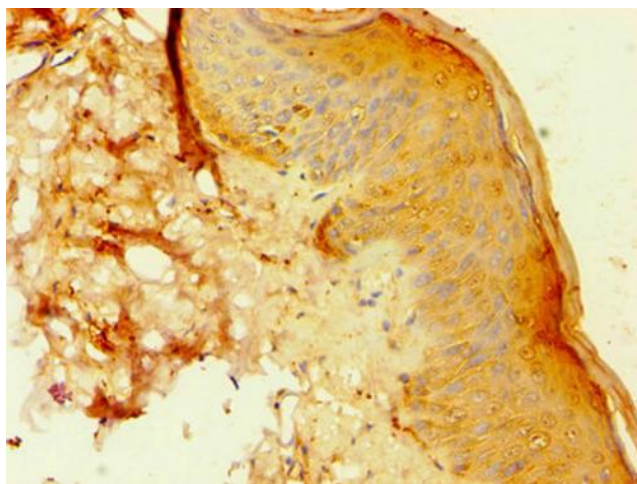


[View online »](#)

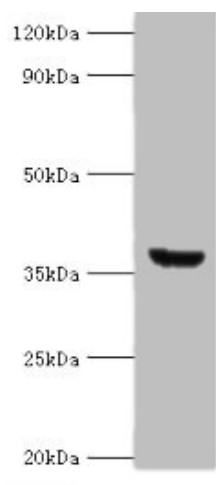
## Product images:



Immunohistochemistry of paraffin-embedded human breast cancer using [TA387702] at dilution of 1:100



Immunohistochemistry of paraffin-embedded human skin tissue using [TA387702] at dilution of 1:100



Western blot

All lanes: ANXA8L2 antibody at 18µg/ml + HepG2 whole cell lysate

Secondary

Goat polyclonal to rabbit IgG at 1/10000 dilution

Predicted band size: 37, 31 kDa

Observed band size: 37 kDa