

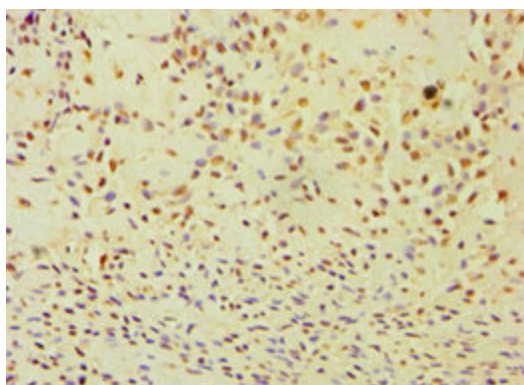
Product datasheet for **TA387702**

ANXA8L1 Rabbit Polyclonal Antibody

Product data:

Product Type:	Primary Antibodies
Applications:	IHC, WB
Recommended Dilution:	Recommended dilution: WB:1:200-1:1000, IHC:1:20-1:200
Reactivity:	Human
Host:	Rabbit
Isotype:	IgG
Clonality:	Polyclonal
Immunogen:	Recombinant Human Annexin A8-like protein 1 protein (1-276AA)
Formulation:	PBS with 0.02% sodium azide, 50% glycerol, pH7.3.
Concentration:	lot specific
Purification:	Antigen Affinity Purified
Conjugation:	Unconjugated
Storage:	Upon receipt, store at -20°C or -80°C. Avoid repeated freeze.
Stability:	1 year from dispatch.
Database Link:	Q5VT79

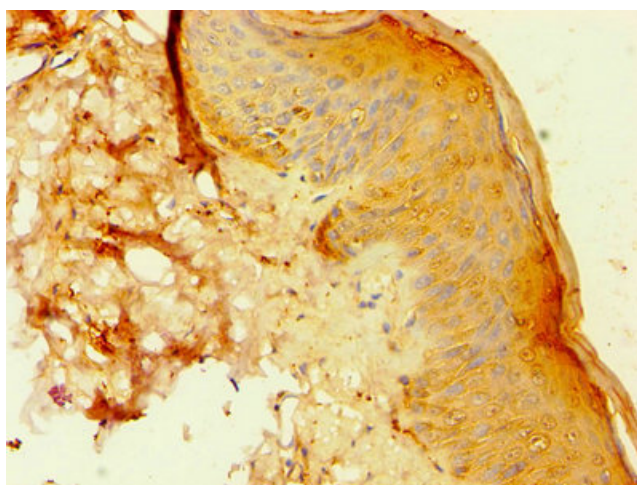
Product images:



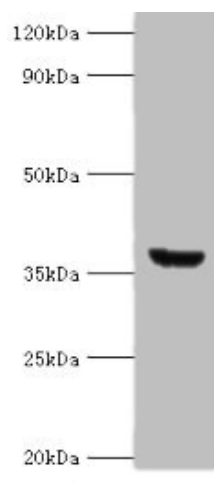
Immunohistochemistry of paraffin-embedded human breast cancer using TA387702 at dilution of 1:100



[View online »](#)



Immunohistochemistry of paraffin-embedded human skin tissue using TA387702 at dilution of 1:100



Western blot
All lanes: ANXA8L2 antibody at 18 μ g/ml + HepG2 whole cell lysate
Secondary
Goat polyclonal to rabbit IgG at 1/10000 dilution
Predicted band size: 37, 31 kDa
Observed band size: 37 kDa