

## Product datasheet for **TA387695M**

### ACSM3 Rabbit Polyclonal Antibody

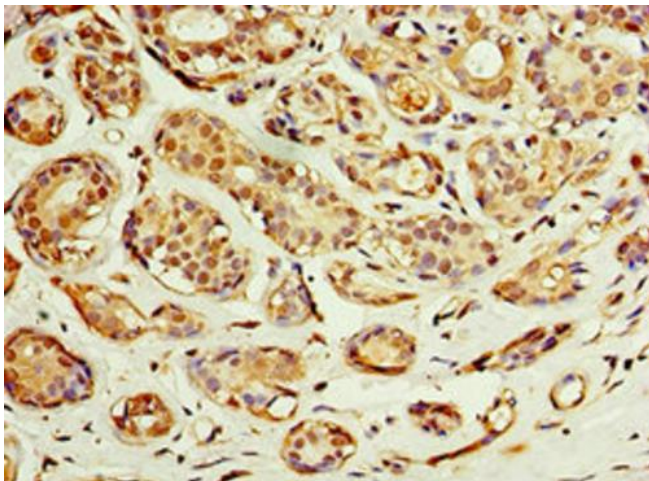
#### Product data:

Product Type:	Primary Antibodies
Applications:	IHC, WB
Recommended Dilution:	Recommended dilution: WB:1:500-1:2000, IHC:1:20-1:200
Reactivity:	Mouse, Human
Host:	Rabbit
Isotype:	IgG
Clonality:	Polyclonal
Immunogen:	Recombinant Human Acyl-coenzyme A synthetase ACSM3, mitochondrial protein (387-586AA)
Formulation:	PBS with 0.02% sodium azide, 50% glycerol, pH7.3.
Concentration:	lot specific
Purification:	Antigen Affinity Purified
Conjugation:	Unconjugated
Storage:	Upon receipt, store at -20°C or -80°C. Avoid repeated freeze.
Stability:	1 year from dispatch.
Database Link:	<a href="#">Q53FZ2</a>
Background:	Has medium-chain fatty acid:CoA ligase activity with broad substrate specificity (in vitro). Acts on acids from C4 to C(11) and on the corresponding 3-hydroxy- and 2,3- or 3,4-unsaturated acids (in vitro) (By similarity).

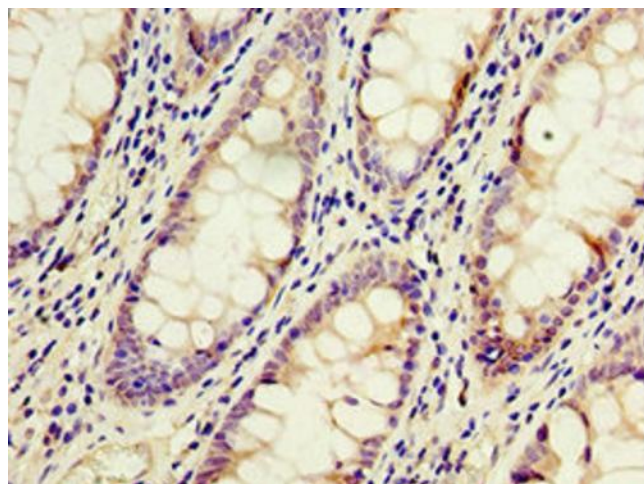


[View online »](#)

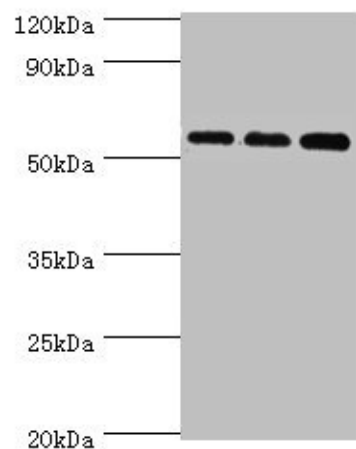
**Product images:**



Immunohistochemistry of paraffin-embedded human breast cancer using [TA387695] at dilution of 1:100



Immunohistochemistry of paraffin-embedded human colon cancer using [TA387695] at dilution of 1:100



#### Western blot

All lanes: Acyl-coenzyme A synthetase ACSM3, mitochondrial antibody at 10µg/ml

Lane 1: 293T whole cell lysate

Lane 2: Mouse kidney tissue

Lane 3: A431 whole cell lysate

Secondary

Goat polyclonal to rabbit IgG at 1/10000 dilution

Predicted band size: 67, 50 kDa

Observed band size: 67 kDa