

Product datasheet for **TA387693M**

MTERF2 Rabbit Polyclonal Antibody

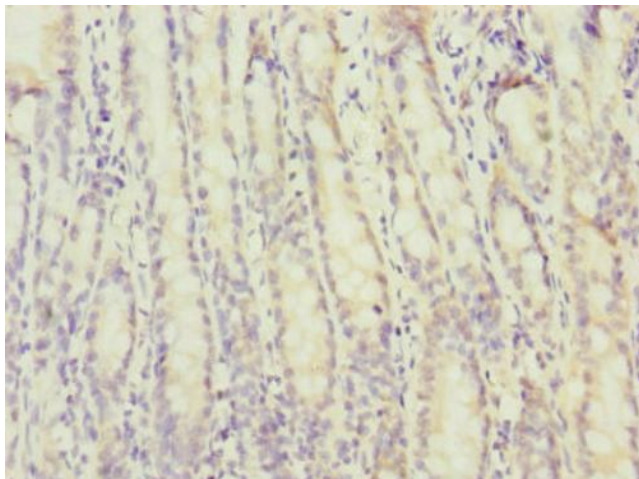
Product data:

Product Type:	Primary Antibodies
Applications:	IHC, WB
Recommended Dilution:	Recommended dilution: WB:1:1000-1:5000, IHC:1:20-1:200
Reactivity:	Human
Host:	Rabbit
Isotype:	IgG
Clonality:	Polyclonal
Immunogen:	Recombinant Human Transcription termination factor 2, mitochondrial protein (1-250AA)
Formulation:	PBS with 0.02% sodium azide, 50% glycerol, pH7.3.
Concentration:	lot specific
Purification:	Antigen Affinity Purified
Conjugation:	Unconjugated
Storage:	Upon receipt, store at -20°C or -80°C. Avoid repeated freeze.
Stability:	1 year from dispatch.
Database Link:	Q49AM1
Background:	Binds promoter DNA and regulates mitochondrial transcription. Required for normal levels of transcription, both for mRNA and tRNA. Required for normal mitochondrial protein synthesis, assembly of respiratory complexes and normal mitochondrial function (By similarity).

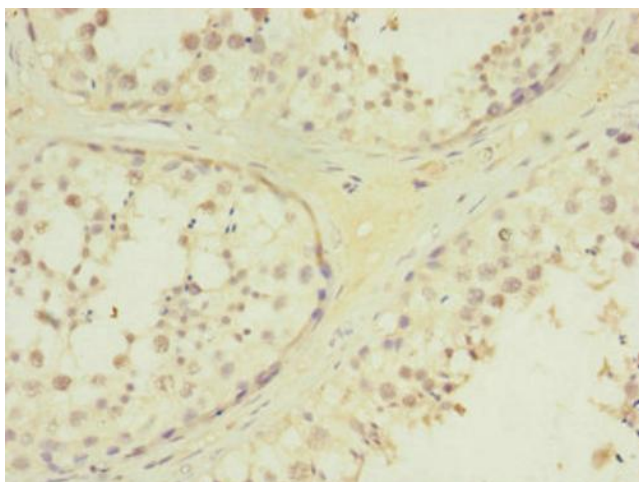


[View online »](#)

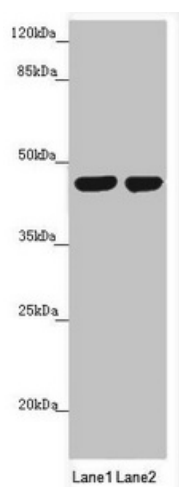
Product images:



Immunohistochemistry of paraffin-embedded human small intestine tissue using [TA387693] at dilution of 1:100



Immunohistochemistry of paraffin-embedded human testis tissue using [TA387693] at dilution of 1:100



Western blot

All lanes: MTERFD3 antibody at 1.66 µg/ml

Lane 1: U251 whole cell lysate

Lane 2: HepG2 whole cell lysate

Secondary

Goat polyclonal to rabbit IgG at 1/10000 dilution

Predicted band size: 44 kDa

Observed band size: 44 kDa