

## Product datasheet for **TA387692**

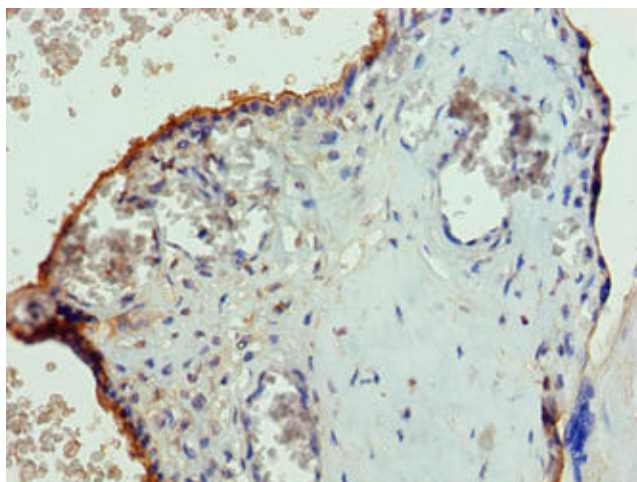
### PGS1 Rabbit Polyclonal Antibody

#### Product data:

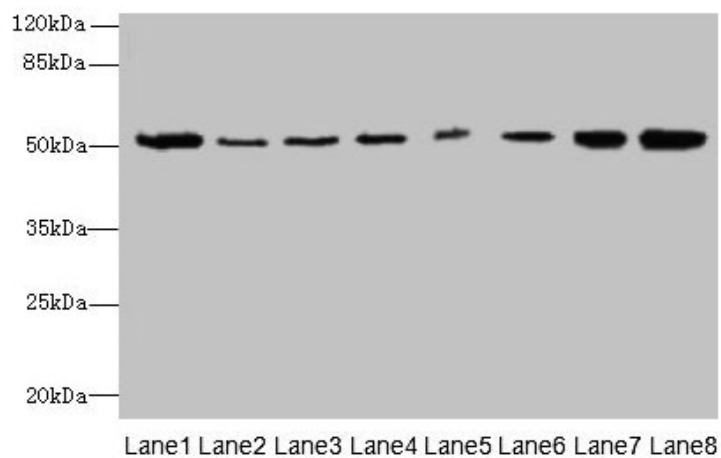
Product Type:	Primary Antibodies
Applications:	IHC, WB
Recommended Dilution:	Recommended dilution: WB:1:1000-1:5000, IHC:1:20-1:200
Reactivity:	Mouse, Human
Host:	Rabbit
Isotype:	IgG
Clonality:	Polyclonal
Immunogen:	Recombinant Human CDP-diacylglycerol--glycerol-3-phosphate 3-phosphatidyltransferase, mitochondrial protein (110-400AA)
Formulation:	Preservative: 0.03% Proclin 300 Constituents: 50% Glycerol, 0.01M PBS, PH 7.4
Concentration:	lot specific
Purification:	>95%, Protein G purified
Conjugation:	Unconjugated
Storage:	Upon receipt, store at -20°C or -80°C. Avoid repeated freeze.
Stability:	1 year from dispatch.
Database Link:	<a href="#">Q32NB8</a>
Background:	Functions in the biosynthesis of the anionic phospholipids phosphatidylglycerol and cardiolipin.



[View online »](#)

**Product images:**

Immunohistochemistry of paraffin-embedded human placenta tissue using TA387692 at dilution of 1:100

**Western blot**

All lanes: PGS1 antibody at 2µg/ml

Lane 1: Mouse liver tissue

Lane 2: Hela whole cell lysate

Lane 3: Jurkat whole cell lysate

Lane 4: HepG2 whole cell lysate

Lane 5: THP-1 whole cell lysate

Lane 6: Mouse spleen tissue

Lane 7: Mouse thymus tissue

Lane 8: Mouse kidney tissue

Secondary

Goat polyclonal to rabbit IgG at 1/10000 dilution

Predicted band size: 63, 52, 38, 6 kDa

Observed band size: 52 kDa