

Product datasheet for **TA387691M**

CSPP1 Rabbit Polyclonal Antibody

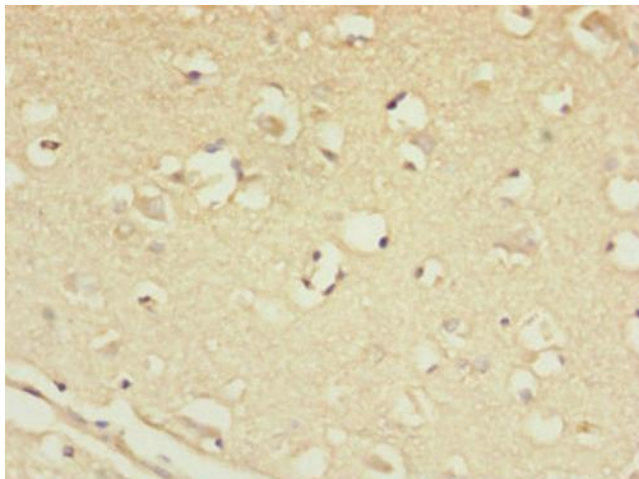
Product data:

Product Type:	Primary Antibodies
Applications:	IHC, WB
Recommended Dilution:	Recommended dilution: WB:1:1000-1:5000, IHC:1:20-1:200
Reactivity:	Human
Host:	Rabbit
Isotype:	IgG
Clonality:	Polyclonal
Immunogen:	Recombinant Human Centrosome and spindle pole-associated protein 1 protein (997-1256AA)
Formulation:	PBS with 0.02% sodium azide, 50% glycerol, pH7.3.
Concentration:	lot specific
Purification:	Antigen Affinity Purified
Conjugation:	Unconjugated
Storage:	Upon receipt, store at -20°C or -80°C. Avoid repeated freeze.
Stability:	1 year from dispatch.
Database Link:	Q1MSJ5
Background:	May play a role in cell-cycle-dependent microtubule organization.

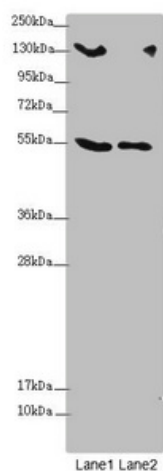


[View online »](#)

Product images:



Immunohistochemistry of paraffin-embedded human brain tissue using [TA387691] at dilution of 1:100



Western blot
All lanes: CSPP1 antibody at 1.53 µg/ml
Lane 1: 293T whole cell lysate
Lane 2: Jurkat whole cell lysate
Secondary
Goat polyclonal to rabbit IgG at 1/10000 dilution
Predicted band size: 146, 142, 102 kDa
Observed band size: 146, 75, 55 kDa