

## Product datasheet for **TA387691**

### CSPP1 Rabbit Polyclonal Antibody

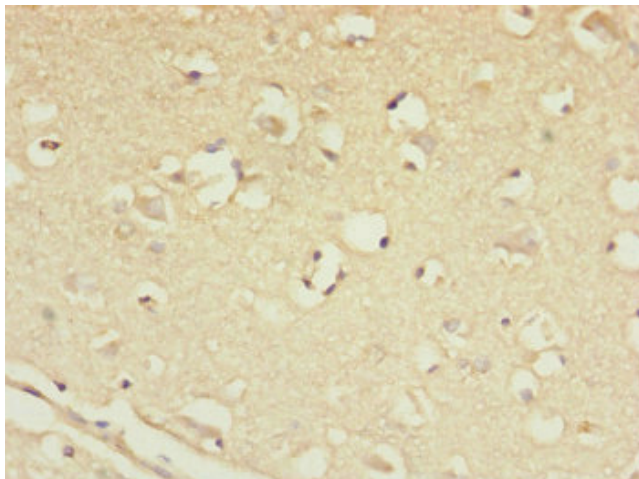
#### Product data:

|                       |                                                                                         |
|-----------------------|-----------------------------------------------------------------------------------------|
| Product Type:         | Primary Antibodies                                                                      |
| Applications:         | IHC, WB                                                                                 |
| Recommended Dilution: | Recommended dilution: WB:1:1000-1:5000, IHC:1:20-1:200                                  |
| Reactivity:           | Human                                                                                   |
| Host:                 | Rabbit                                                                                  |
| Isotype:              | IgG                                                                                     |
| Clonality:            | Polyclonal                                                                              |
| Immunogen:            | Recombinant Human Centrosome and spindle pole-associated protein 1 protein (997-1256AA) |
| Formulation:          | PBS with 0.02% sodium azide, 50% glycerol, pH7.3.                                       |
| Concentration:        | lot specific                                                                            |
| Purification:         | Antigen Affinity Purified                                                               |
| Conjugation:          | Unconjugated                                                                            |
| Storage:              | Upon receipt, store at -20°C or -80°C. Avoid repeated freeze.                           |
| Stability:            | 1 year from dispatch.                                                                   |
| Database Link:        | <a href="#">Q1MSJ5</a>                                                                  |
| Background:           | May play a role in cell-cycle-dependent microtubule organization.                       |



[View online »](#)

Product images:



Immunohistochemistry of paraffin-embedded human brain tissue using TA387691 at dilution of 1:100



Western blot  
 All lanes: CSPP1 antibody at 1.53 µg/ml  
 Lane 1: 293T whole cell lysate  
 Lane 2: Jurkat whole cell lysate  
 Secondary  
 Goat polyclonal to rabbit IgG at 1/10000 dilution  
 Predicted band size: 146, 142, 102 kDa  
 Observed band size: 146, 75, 55 kDa