

Product datasheet for **TA387690**

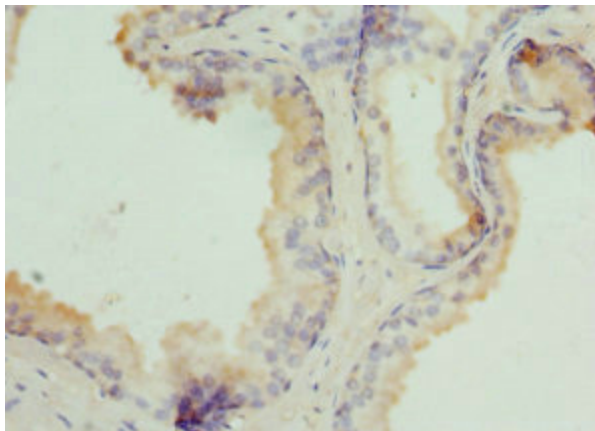
TPD52L1 Rabbit Polyclonal Antibody

Product data:

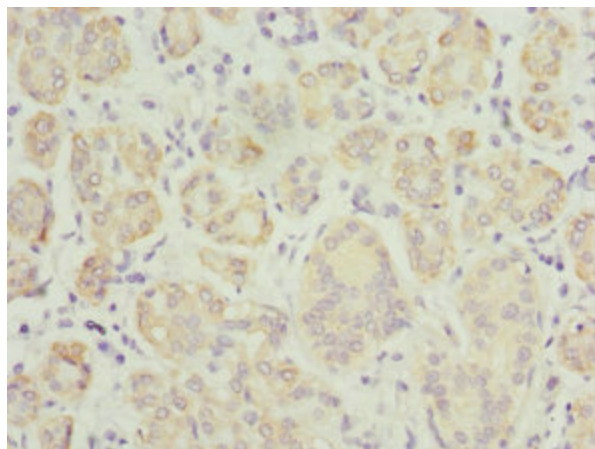
Product Type:	Primary Antibodies
Applications:	IHC, WB
Recommended Dilution:	Recommended dilution: WB:1:1000-1:5000, IHC:1:20-1:200
Reactivity:	Human
Host:	Rabbit
Isotype:	IgG
Clonality:	Polyclonal
Immunogen:	Recombinant Human Tumor protein D53 protein (1-144AA)
Formulation:	PBS with 0.02% sodium azide, 50% glycerol, pH7.3.
Concentration:	lot specific
Purification:	Antigen Affinity Purified
Conjugation:	Unconjugated
Storage:	Upon receipt, store at -20°C or -80°C. Avoid repeated freeze.
Stability:	1 year from dispatch.
Database Link:	Q16890
Background:	cytoplasm, perinuclear region of cytoplasm, identical protein binding, protein heterodimerization activity, protein homodimerization activity, G2/M transition of mitotic cell cycle, positive regulation of apoptotic signaling pathway, positive regulation of JNK cascade, positive regulation of MAP kinase activity



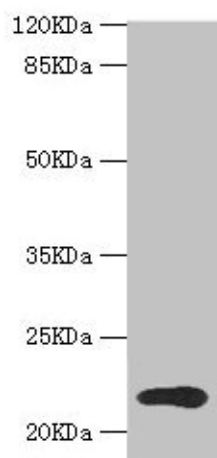
[View online »](#)

Product images:

Immunohistochemistry of paraffin-embedded human prostate cancer using TA387690 at dilution of 1:100



Immunohistochemistry of paraffin-embedded human salivary gland tissue using TA387690 at dilution of 1:100



Western blot
All lanes: TPD52L1 antibody at 1.31 $\mu\text{g}/\text{ml}$ + MCF-7 whole cell lysate
Secondary
Goat polyclonal to rabbit IgG at 1/10000 dilution
Predicted band size: 23, 17, 15, 12, 20 kDa
Observed band size: 23 kDa