

Product datasheet for **TA387686M**

ELF2 Rabbit Polyclonal Antibody

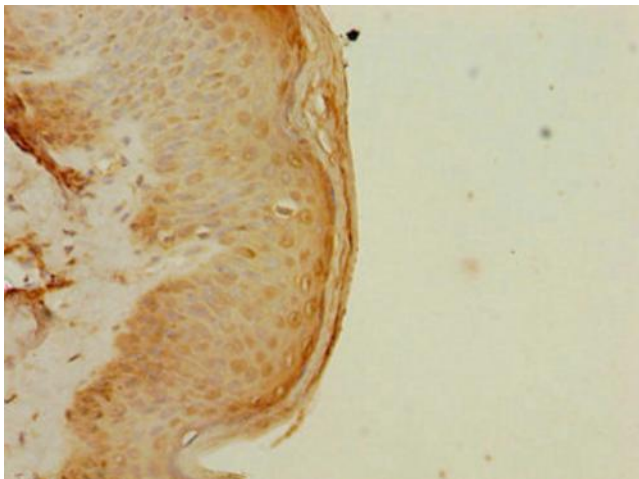
Product data:

Product Type:	Primary Antibodies
Applications:	IHC, WB
Recommended Dilution:	Recommended dilution: WB:1:1000-1:5000, IHC:1:20-1:200
Reactivity:	Human
Host:	Rabbit
Isotype:	IgG
Clonality:	Polyclonal
Immunogen:	Recombinant Human ETS-related transcription factor Elf-2 protein (1-140AA)
Formulation:	PBS with 0.02% sodium azide, 50% glycerol, pH7.3.
Concentration:	lot specific
Purification:	Antigen Affinity Purified
Conjugation:	Unconjugated
Storage:	Upon receipt, store at -20°C or -80°C. Avoid repeated freeze.
Stability:	1 year from dispatch.
Database Link:	Q15723
Background:	Isoform 1 transcriptionally activates the LYN and BLK promoters and acts synergistically with RUNX1 to transactivate the BLK promoter.

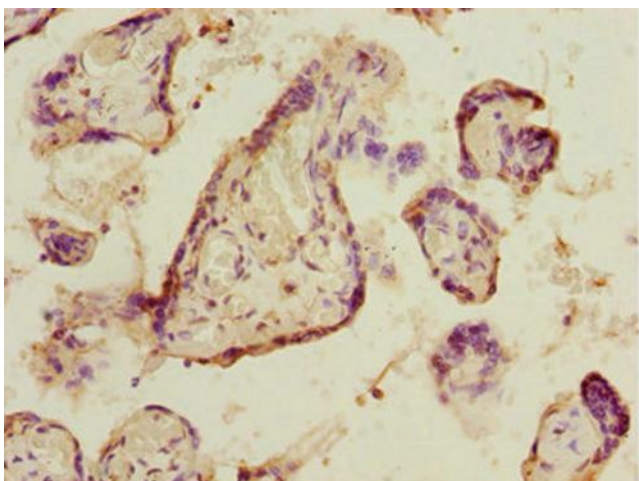


[View online »](#)

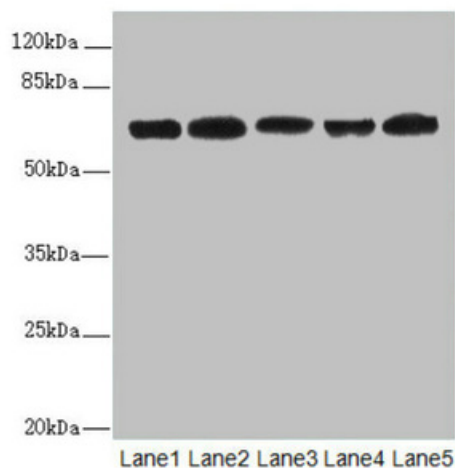
Product images:



Immunohistochemistry of paraffin-embedded human skin tissue using [TA387686] at dilution of 1:100



Immunohistochemistry of paraffin-embedded human placenta tissue using [TA387686] at dilution of 1:100



Western blot

All lanes: ELF2 antibody at 2.27µg/ml

Lane 1: HL60 whole cell lysate

Lane 2: A549 whole cell lysate

Lane 3: MCF-7 whole cell lysate

Lane 4: Jurkat whole cell lysate

Lane 5: Hela whole cell lysate

Secondary

Goat polyclonal to rabbit IgG at 1/10000 dilution

Predicted band size: 64, 63, 57, 58, 55 kDa

Observed band size: 64, 50 kDa