

## Product datasheet for **TA387683**

### HEPACAM Rabbit Polyclonal Antibody

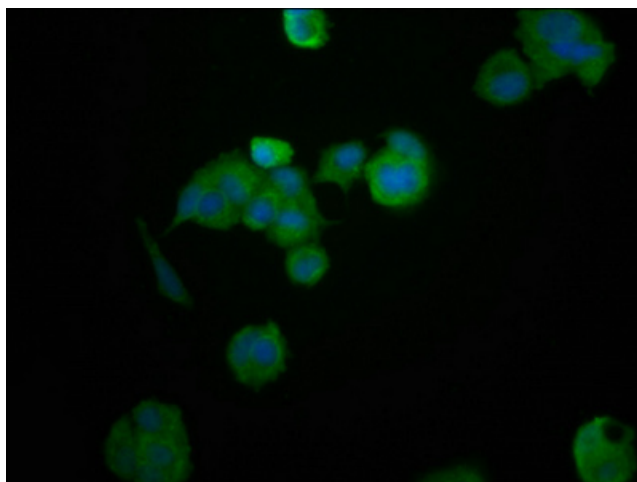
#### Product data:

Product Type:	Primary Antibodies
Applications:	IF, WB
Recommended Dilution:	Recommended dilution: WB:1:500-1:5000, IF:1:200-1:500
Reactivity:	Human
Host:	Rabbit
Isotype:	IgG
Clonality:	Polyclonal
Immunogen:	Recombinant Human Hepatocyte cell adhesion molecule protein (265-415AA)
Formulation:	Preservative: 0.03% Proclin 300 Constituents: 50% Glycerol, 0.01M PBS, pH 7.4
Concentration:	lot specific
Purification:	>95%, Protein G purified
Conjugation:	Unconjugated
Storage:	Upon receipt, store at -20°C or -80°C. Avoid repeated freeze.
Stability:	1 year from dispatch.
Database Link:	<a href="#">Q14CZ8</a>
Background:	Involved in regulating cell motility and cell-matrix interactions. May inhibit cell growth through suppression of cell proliferation.

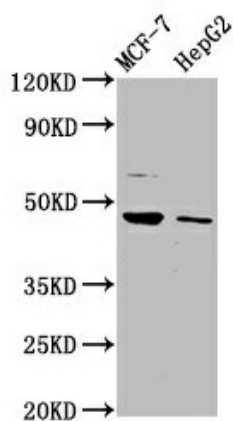


[View online »](#)

## Product images:



Immunofluorescence staining of MCF-7 cells with TA387683 at 1:200, counter-stained with DAPI. The cells were fixed in 4% formaldehyde, permeabilized using 0.2% Triton X-100 and blocked in 10% normal Goat Serum. The cells were then incubated with the antibody overnight at 4°C. The secondary antibody was Alexa Fluor 488-conjugated AffiniPure Goat Anti-Rabbit IgG(H+L).



## Western Blot

Positive WB detected in: MCF-7 whole cell lysate, HepG2 whole cell lysate

All lanes: HEPACAM antibody at 3.2µg/ml  
Secondary

Goat polyclonal to rabbit IgG at 1/50000 dilution  
Predicted band size: 47, 41 kDa  
Observed band size: 47 kDa