

Product datasheet for **TA387679M**

COL9A3 Rabbit Polyclonal Antibody

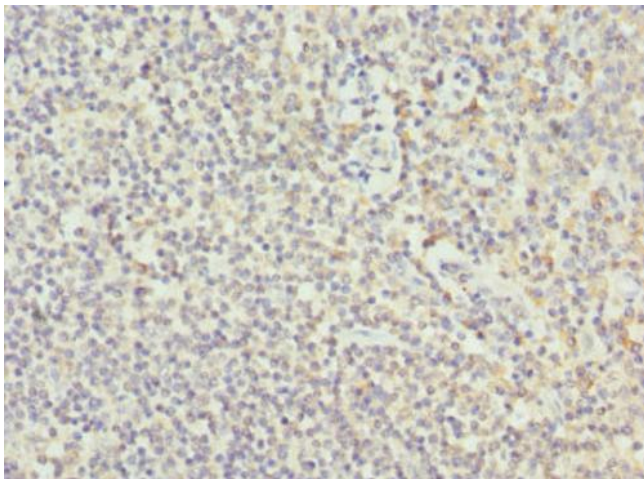
Product data:

Product Type:	Primary Antibodies
Applications:	IHC, WB
Recommended Dilution:	Recommended dilution: WB:1:1000-1:5000, IHC:1:20-1:200
Reactivity:	Human
Host:	Rabbit
Isotype:	IgG
Clonality:	Polyclonal
Immunogen:	Recombinant Human Collagen alpha-3(IX) chain protein (445-684AA)
Formulation:	PBS with 0.02% sodium azide, 50% glycerol, pH7.3.
Concentration:	lot specific
Purification:	Antigen Affinity Purified
Conjugation:	Unconjugated
Storage:	Upon receipt, store at -20°C or -80°C. Avoid repeated freeze.
Stability:	1 year from dispatch.
Database Link:	Q14050
Background:	Structural component of hyaline cartilage and vitreous of the eye.

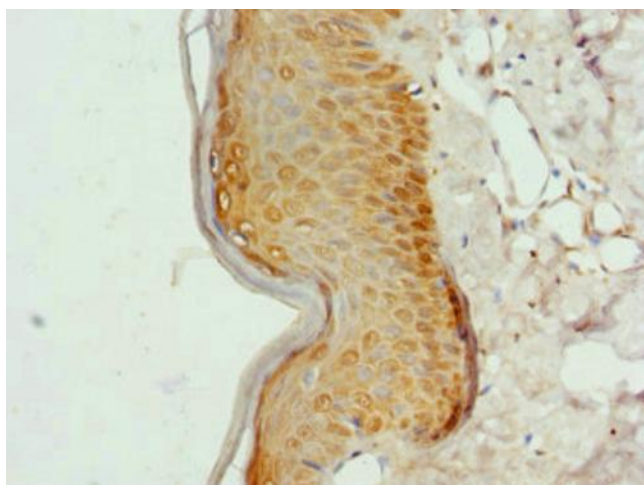


[View online »](#)

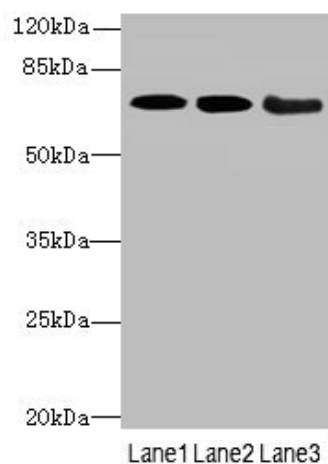
Product images:



Immunohistochemistry of paraffin-embedded human tonsil tissue using [TA387679] at dilution of 1:100



Immunohistochemistry of paraffin-embedded human skin tissue using [TA387679] at dilution of 1:100



Western blot

All lanes: COL9A3antibody at 3.66µg/ml

Lane 1: K562 whole cell lysate

Lane 2: MCF-7 whole cell lysate

Lane 3: A549 whole cell lysate

Secondary

Goat polyclonal to rabbit IgG at 1/10000 dilution

Predicted band size: 64 kDa

Observed band size: 64 kDa