

## Product datasheet for **TA387674**

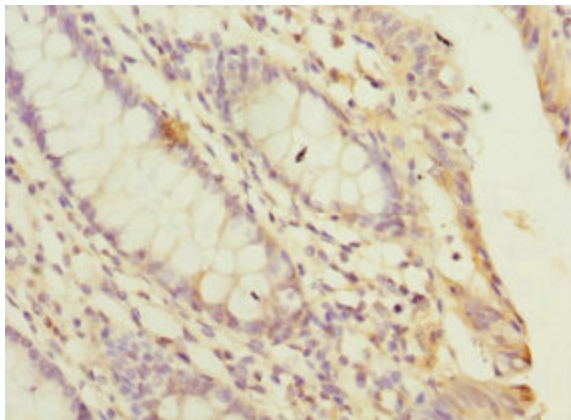
### PPP2R5C Rabbit Polyclonal Antibody

#### Product data:

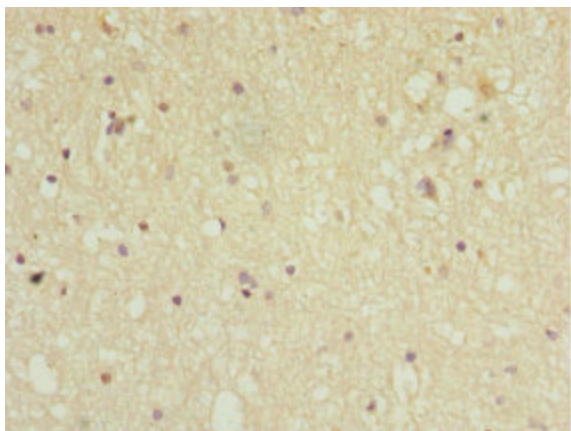
Product Type:	Primary Antibodies
Applications:	IHC, WB
Recommended Dilution:	Recommended dilution: WB:1:1000-1:5000, IHC:1:20-1:200
Reactivity:	Human
Host:	Rabbit
Isotype:	IgG
Clonality:	Polyclonal
Immunogen:	Recombinant Human Serine/threonine-protein phosphatase 2A 56 kDa regulatory subunit gamma isoform protein (1-320AA)
Formulation:	PBS with 0.02% sodium azide, 50% glycerol, pH7.3.
Concentration:	lot specific
Purification:	Antigen Affinity Purified
Conjugation:	Unconjugated
Storage:	Upon receipt, store at -20°C or -80°C. Avoid repeated freeze.
Stability:	1 year from dispatch.
Database Link:	<a href="#">Q13362</a>
Background:	The B regulatory subunit might modulate substrate selectivity and catalytic activity, and also might direct the localization of the catalytic enzyme to a particular subcellular compartment. The PP2A-PPP2R5C holoenzyme may specifically dephosphorylate and activate TP53 and play a role in DNA damage-induced inhibition of cell proliferation. PP2A-PPP2R5C may also regulate the ERK signaling pathway through ERK dephosphorylation.



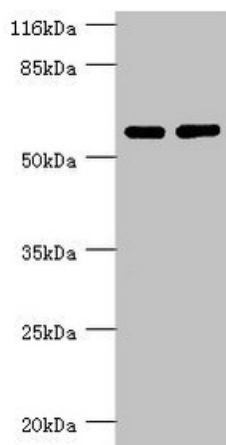
[View online »](#)

**Product images:**

Immunohistochemistry of paraffin-embedded human colon cancer using TA387674 at dilution of 1:100



Immunohistochemistry of paraffin-embedded human brain tissue using TA387674 at dilution of 1:100



## Western blot

All lanes: PPP2R5C antibody at 1.31  $\mu\text{g/ml}$

Lane 1: MM231 whole cell lysate

Lane 2: K562 whole cell lysate

Secondary

Goat polyclonal to rabbit IgG at 1/10000 dilution

Predicted band size: 62, 53, 57, 63, 65 kDa

Observed band size: 62 kDa