

Product datasheet for **TA387668**

SLC3A1 Rabbit Polyclonal Antibody

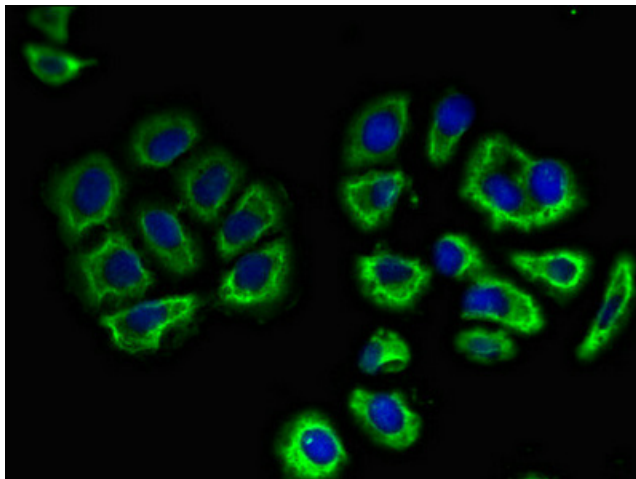
Product data:

Product Type:	Primary Antibodies
Applications:	IF, IHC, WB
Recommended Dilution:	Recommended dilution: WB:1:200-1:5000, IHC:1:20-1:200, IF:1:50-1:200
Reactivity:	Mouse, Rat, Human
Host:	Rabbit
Isotype:	IgG
Clonality:	Polyclonal
Immunogen:	Recombinant Human Neutral and basic amino acid transport protein rBAT protein (1-68AA)
Formulation:	Preservative: 0.03% Proclin 300 Constituents: 50% Glycerol, 0.01M PBS, pH 7.4
Concentration:	lot specific
Purification:	>95%, Protein G purified
Conjugation:	Unconjugated
Storage:	Upon receipt, store at -20°C or -80°C. Avoid repeated freeze.
Stability:	1 year from dispatch.
Database Link:	Q07837
Background:	Involved in the high-affinity, sodium-independent transport of cystine and neutral and dibasic amino acids (system B(0,+)-like activity). May function as an activator of SLC7A9 and be involved in the high-affinity reabsorption of cystine in the kidney tubule.

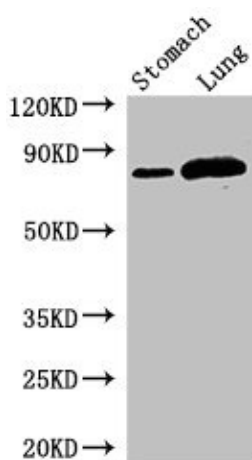


[View online »](#)

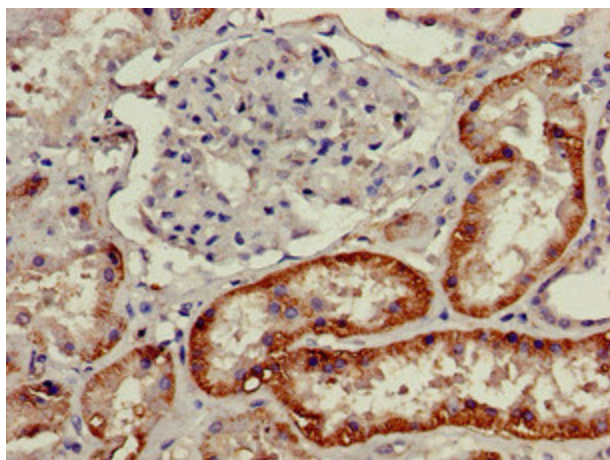
Product images:



Immunofluorescent analysis of A549 cells using TA387668 at dilution of 1:100 and Alexa Fluor 488-conjugated AffiniPure Goat Anti-Rabbit IgG(H+L)



Western Blot
Positive WB detected in: Mouse stomach tissue,
Rat lung tissue
All lanes: SLC3A1 antibody at 2.8 μ g/ml
Secondary
Goat polyclonal to rabbit IgG at 1/50000 dilution
Predicted band size: 79, 47, 46, 36, 58, 67, 64 kDa
Observed band size: 79 kDa



Immunohistochemistry of paraffin-embedded human kidney tissue using TA387668 at dilution of 1:100