

Product datasheet for **TA387666M**

ZP2 Rabbit Polyclonal Antibody

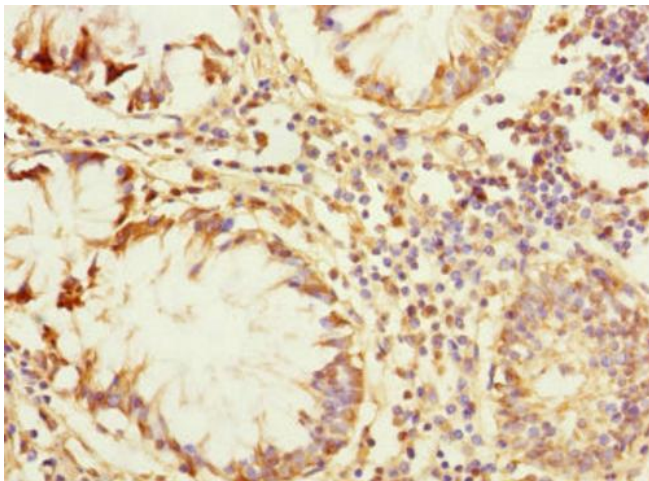
Product data:

| | |
|-----------------------|--|
| Product Type: | Primary Antibodies |
| Applications: | IHC, WB |
| Recommended Dilution: | Recommended dilution: WB:1:1000-1:5000, IHC:1:20-1:200 |
| Reactivity: | Human |
| Host: | Rabbit |
| Isotype: | IgG |
| Clonality: | Polyclonal |
| Immunogen: | Recombinant Human Zona pellucida sperm-binding protein 2 protein (651-745AA) |
| Formulation: | PBS with 0.02% sodium azide, 50% glycerol, pH7.3. |
| Concentration: | lot specific |
| Purification: | Antigen Affinity Purified |
| Conjugation: | Unconjugated |
| Storage: | Upon receipt, store at -20°C or -80°C. Avoid repeated freeze. |
| Stability: | 1 year from dispatch. |
| Database Link: | Q05996 |
| Background: | The mammalian zona pellucida, which mediates species-specific sperm binding, induction of the acrosome reaction and prevents post-fertilization polyspermy, is composed of three to four glycoproteins, ZP1, ZP2, ZP3, and ZP4. ZP2 may act as a secondary sperm receptor. |

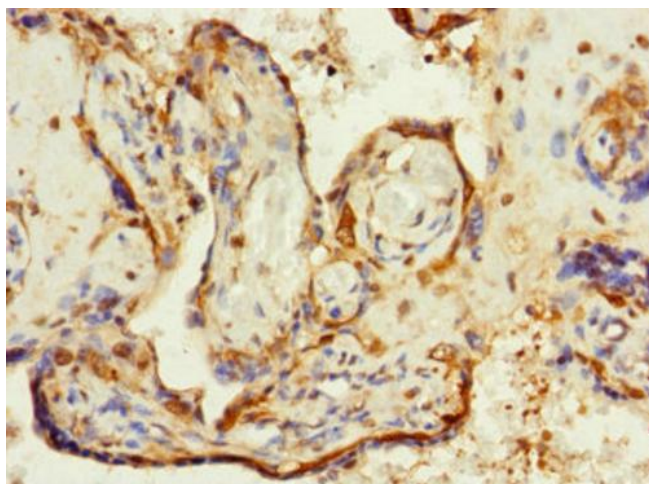


[View online »](#)

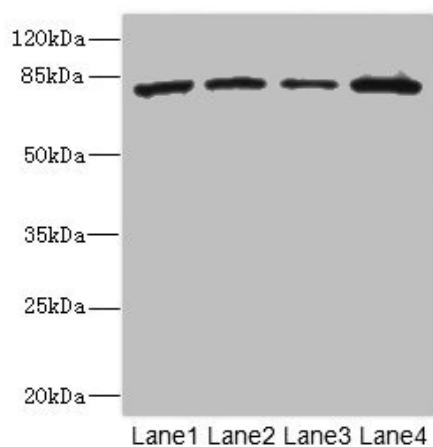
Product images:



Immunohistochemistry of paraffin-embedded human colon cancer using [TA387666] at dilution of 1:100



Immunohistochemistry of paraffin-embedded human placenta tissue using [TA387666] at dilution of 1:100



Western blot

All lanes: ZP2 antibody at 3.06µg/ml

Lane 1: 293T whole cell lysate

Lane 2: HeLa whole cell lysate

Lane 3: Jurkat whole cell lysate

Lane 4: HepG2 whole cell lysate

Secondary

Goat polyclonal to rabbit IgG at 1/10000 dilution

Predicted band size: 83, 82 kDa

Observed band size: 83 kDa