

Product datasheet for **TA387666**

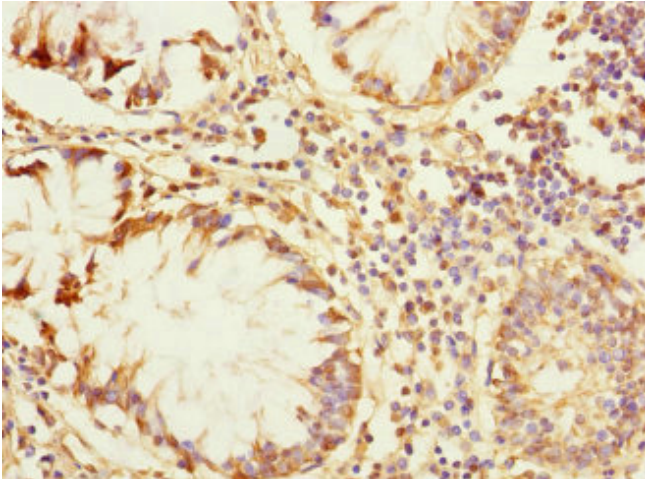
ZP2 Rabbit Polyclonal Antibody

Product data:

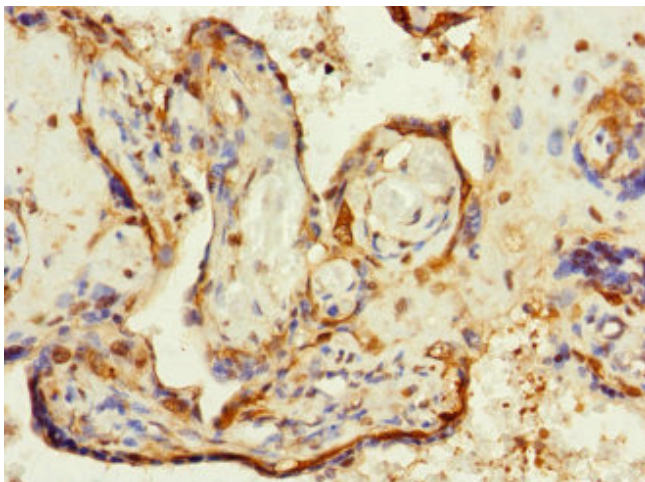
Product Type:	Primary Antibodies
Applications:	IHC, WB
Recommended Dilution:	Recommended dilution: WB:1:1000-1:5000, IHC:1:20-1:200
Reactivity:	Human
Host:	Rabbit
Isotype:	IgG
Clonality:	Polyclonal
Immunogen:	Recombinant Human Zona pellucida sperm-binding protein 2 protein (651-745AA)
Formulation:	PBS with 0.02% sodium azide, 50% glycerol, pH7.3.
Concentration:	lot specific
Purification:	Antigen Affinity Purified
Conjugation:	Unconjugated
Storage:	Upon receipt, store at -20°C or -80°C. Avoid repeated freeze.
Stability:	1 year from dispatch.
Database Link:	Q05996
Background:	The mammalian zona pellucida, which mediates species-specific sperm binding, induction of the acrosome reaction and prevents post-fertilization polyspermy, is composed of three to four glycoproteins, ZP1, ZP2, ZP3, and ZP4. ZP2 may act as a secondary sperm receptor.



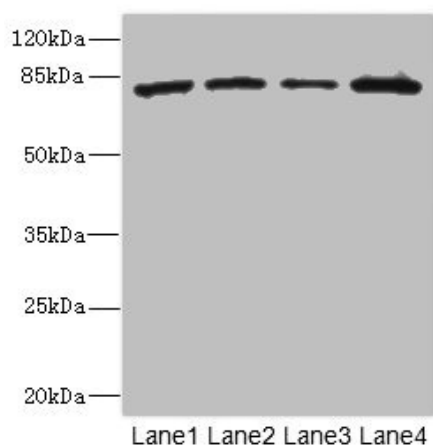
[View online »](#)

Product images:

Immunohistochemistry of paraffin-embedded human colon cancer using TA387666 at dilution of 1:100



Immunohistochemistry of paraffin-embedded human placenta tissue using TA387666 at dilution of 1:100



Western blot

All lanes: ZP2 antibody at 3.06 μ g/ml

Lane 1: 293T whole cell lysate

Lane 2: HeLa whole cell lysate

Lane 3: Jurkat whole cell lysate

Lane 4: HepG2 whole cell lysate

Secondary

Goat polyclonal to rabbit IgG at 1/10000 dilution

Predicted band size: 83, 82 kDa

Observed band size: 83 kDa